

Microwave Level Meter  
Adjustment software  
DTM / PACTware  
Installation manual  
Type : MWLM-PR26-HART-DTM

※The operator should read this Instruction Manual carefully and  
handle the device correctly.

---

**Matsushima Measure Tech Co.,Ltd.**

1-8-18 Norimatsu-Higashi, Yahatanishi-ku, Kitakyushu 807-0837 Japan  
Phone No. (8193) 691-3731 Fax No. (8193) 691-3735  
<https://www.matsushima-m-tech.com>

---

## Table of Contents

Safety Precautions.....	2
1. Conditions to use software.....	3
1-1. Agreement.....	3
1-2. Data protection.....	3
1-3. Restrictions on reverse engineering and others.....	3
2. Overview.....	4
3. Installation of software.....	5
3-1. Confirmation before installation.....	5
3-1-1. Confirmation administrator authority.....	5
3-1-2. Confirmation of installation procedure.....	5
(1) New installation.....	5
(2) In the case of upgrading "PACTware" and "Matsushima DTM".....	5
(3) In case of upgrading only "Matsushima DTM".....	6
3-1-3. Checking the Microsoft .NET Framework.....	6
3-2. Installation of the PACTware package.....	9
(1). Installation of the PACTware.....	9
(2). Installation of the Generic HART-DTM.....	12
(3). Installation of the HART Communication DTM.....	13
(4). Installation of the Matsushima DTM .....	15
3-3. Installation of the Matsushima DTM.....	18
3-4. Installation of the HART Modem Driver.....	21
3-4-1. In the case of MHM-01.....	21
3-4-2. In the case of MHM-02.....	25
4. Auto start settings.....	26
4-1. Starting PACTware.....	26
4-2. Confirmation of the device catalog.....	27
(1) Confirmation of the device catalog.....	27
(2) Confirmation of the Matsushima DTM Version.....	28
(3) Installation of the Microsoft MSXML.....	29
4-3. Create a project.....	31
(1) Setting of the communication DTM.....	31
(2) Setting of the device DTM.....	33
(3) Setting of the options.....	35
(4) Save a project.....	36
4-4. Termination of the program.....	37
5. Language setting.....	38
6. Change of the startup file name.....	40
7. Uninstallation of software.....	41
7-1. Uninstallation of the PACTware.....	41
7-2. Uninstallation of the Generic HART-DTM.....	42
7-3. Uninstallation of the HART Communication DTM.....	43
7-4. Uninstallation of the Matsushima DTM.....	44
7-5. Uninstallation of the HART Modem Driver.....	46
7-5-1. In the case of MHM-01.....	46
7-5-2. In the case of MHM-02.....	47

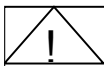
## Safety Precautions

- Be sure to thoroughly read the instruction manual before using the products.
- Keep the instruction manual in a safe, convenient location for future reference.
- All or part of the contents described in this manual may be changed without any notice.
- Due to our constant striving for further improvement of products, parts or products that differ from those described in this manual may be substituted.



### **WARNING** (Failure to observe this WARNING may cause a fatal or serious injury.)

- Be sure to confirm that any peripheral equipment does not move before installation work.  
In addition, observe safety requirements for installation work where high-place work is expected.
- Be sure to turn off the power source before wiring, mounting and transportation work. (Failure to observe this WARNING may result in an electric shock/ injury or equipment damage due to short-circuit.)
- Carry out wiring work correctly with reference to a proper drawing.
- Never disassemble the equipment. (Failure to observe this WARNING may result in an electric shock.)
- Do not open the cover under an explosive environmental condition when power is entered. (Failure to observe this WARNING may result in an injury or equipment damage.)
- Do not place or store the equipment in any hostile environmental place where it will be subjected to direct sunlight, rain, water droplet, hazardous gas/water, etc..



### **CAUTION** (Failure to observe this CAUTION may cause a moderate injury or equipment damage.)

- Do not use the equipment for any purpose other than the original purpose of use.
- Be sure to confirm the specification of equipment and use the equipment within the range of specification.  
(Mounting conditions such as temperature, power source, frequency, etc.)
- Make sure a correct wiring before applying power source.
- Do not have a shock or strong impact to the equipment.  
(Failure to observe this CAUTION may result in equipment damage.)
- Be sure to connect necessary terminals (grounding, etc.).
- Remove all wiring to the equipment before doing electrical welding work near the equipment.
- Do not forcedly bend or pull the lead wire also do not use unnecessarily long wire.
- Tighten the cover, lead outlet, etc. properly so that dust, rainwater, etc. do not enter inside the equipment.
- Do not use the equipment under a corrosive condition (NH<sub>3</sub>, SO<sub>2</sub>, Cl<sub>2</sub>, etc.).
- Be sure to tighten the cable grand so that outer air does not enter inside the equipment.
- When applying piping connection such as conduit, etc. instead of cable grand, apply putty or equivalents on the cable entry so that outer air does not enter inside the equipment.



### **IMPORTANT** (indicates notes or information to help customers.)

#### Limitations of Warranty:

- Warranty period shall be one year from the date of delivery (ex-factory).
- Any damage of any other products that have occurred for use of the equipment is not covered by this warranty. Also any loss induced by failure or malfunction of the equipment is not covered by this warranty.
- Failure or malfunction caused by following are not covered by this warranty:
  - a. Modification or repair by a party other than MATSUSHIMA's authorized personnel, or replacement of parts not recommended by MATSUSHIMA.
  - b. Inadequate storage, installation, use, inspection or maintenance that does not comply with specifications.
  - c. Cause for any peripheral equipment or device.
  - d. Accident beyond control and force majeure (fire, earthquake, flood, riots, etc.).

Lack of instructions to MATSUSHIMA for information or safety requirements that can be predicted only by customers' side.

This warranty conditions do not limit customers' legal right.

Price for the equipment does not include any charge for services such as commissioning, supervising, etc..

## **1. Conditions to use Software**

Software:

\*PACTware software (Copyright: PACTware Consortium e.V.)

\*Matsushima DTM software (Copyright: Matsushima Measure Tech Co., Ltd.)

The PACTware software, Matsushima DTM software and related documentations, whether on disk, on compact disc, in read only memory, online, or any other media, are collectively referred to as the "Software".

### **1-1. Agreement**

Matsushima Measure Tech Co., Ltd grants to User (either as an individual or legal entity) non-exclusive, non-transferable, license to use the Software and documentation solely for User's own internal personal or business purposes.

The PACTware software and related documentations are license granted by PACTware Consortium e.V to Matsushima Measure Tech Co., Ltd.

The Software must be installed and used only on one PC.

You may not duplicate, sell or transfer the Software to any third party and may not run the Software from one computer to other computer through network.

User may not modify, translate, rent, lease or create derivative works based upon the Software or any part thereof.

Matsushima Measure Tech disclaims any warranty for the Software. The Software is provided "as is" without any warranty of any kind, especially the running of the Software or the use for a special purpose.

### **1-2. Data protection**

PACTware software, related documents and its technical parts, algorithm, process know how is protected by copyright and international copyright contracts as well as by further laws and contracts of intellectual property.

Matsushima DTM software, related documents is protected by copyright intellectual property of Matsushima Measure Tech Co., Ltd.

User shall not disclose or leak, to any third party other than essential employees of User that have a need to know, confidential information or other data related to the Software and documents provided by MATSUSHIMA MEASURE TECH Co., Ltd. User shall use same degree of care to protect the confidential Information as User uses to protect and store its own confidential information.

### **1-3. Restrictions on reverse engineering and others**

You may not reverse engineer (attempts to extract technical information from the Software and related documents including investigation, analysis and examination) decompile, disassemble, or otherwise reduce the Software to human-perceivable form.

## 2. Overview

This document is Manual for installing software MWLM - PR26 HART DTM (hereinafter abbreviated as Matsushima DTM) .

Matsushima DTM perform parameter setting, waveform adjustment, etc. of the 26 GHz band microwave level meter.

"Matsushima DTM" is a device DTM that runs on the frame application "PACTware" and is used in conjunction with the software "communication DTM" which communicates with the level meter.

\*DTM (Device Type Manager): Software for field devices operating that runs on frame application.

\*PACTware (Process Automation Configuration Tool): Frame application software that does not depend on equipment manufacturer and that use as field equipment adjustment tool.

### System requirements

Software requirements		
	Operating system (Note 1)	Windows Vista, Windows 7,8,10,11① (Note 2)
	Execution environment	Microsoft .NET Framework 3.5 and 4.0 or higher ②
Hardware requirements		
	Processor	CPU 1GHz or higher
	Memory (Note 2)	512MB or higher
	Hard disk	1GB free disk space
	Graphics resolution	1024 x 768 or higher
	Interface	USB 1 port or higher
	Mouse	Microsoft compatible or an equivalent pointing device
	CD drive	For software installation
	HARTModem	MHM-01, MHM-02 (Recommended)
Others		
	MS Excel to open CSV-File ④	
	Adobe Acrobat Reader ⑤ to open PDF-Help file	

**Note 1. Windows 95, 98, ME, NT 4.0 and Windows 2000, XP are not supported by PACTware 5.0.**

**Note 2.** Windows 11 is not supported by PACTware 5.0.

Matsushima DTM set in only English is confirmed to work for PACTware5.0.

**Note 3. At least 2GB memory required for long time recording like 3 days or more.**

①②④ Registered trademark of Microsoft Corporation

② Microsoft .NET Framework 3.5 and 4.0 or higher is prerequisite for PACTware 5.0.

⑤ Registered product of Adobe Systems Incorporated

### 3. Installation of software

The setup includes the following programs:

- PACTware from PACTware Consortium e.V.
- Generic HART device-DTM from ICS GmbH
- HART Protocol Communication DTM from CodeWrights GmbH
- Matsushima DTM from Matsushima Measure Tech Ltd
- HART Modem Driver from ProComSol Ltd(MHM-01), or MG CO., LTD(MHM-02).

#### 3-1. Confirmation before installation

##### 3-1-1. Confirmation administrator authority

Please close all open programs before starting installation.

Administrator authority is required for software installation.

Please sign in with the authority of the administrator of the computer.

<Confirmation administrator authority>

"Control Panel"> "User Accounts"> "User Accounts">"Manage User Accounts"

The group of user names that you use in "Manage User Accounts" is "Administrators".

Please confirm that it is. If it is not "Administrators", please set it to "Administrators" in the property.

<Temporarily disable antivirus software>

Depending on your antivirus software, Matsushima DTM may not be installed.

In that case, please temporarily "disable" the antivirus software, and then "enable" it again after installation.

#### 3-1-2. Confirmation of installation procedure

##### (1) New installation

Please do the following steps (a) - (e).

- (a) 3-1-3. Checking the Microsoft .NET Framework
- (b) 3-2. Installation of the PACTware package
- (c) 3-4. Installation of the HART Modem Driver
- (d) 4. Auto start setting
- (e) 5. Language setting

##### (2) In the case of upgrading "PACTware" and "Matsushima DTM".

It is assumed that "PACTware", "Generic HART - DTM", "HART Communication DTM", "Matsushima DTM", "HART Modem Driver" are already installed.

This is done when updating "PACTware" and "Matsushima DTM" to the latest version.

Please do the following steps (a) - (f).

- (a) 3-1-3. Checking the Microsoft .NET Framework
- (b) Uninstallation of the currently installed software

Perform the following items 7-1 to 7-5 and uninstall it.

Also delete the previously created startup file (=project file= "Matsushima DTM.PW \*").

- 7-1. Uninstallation of the PACTware
- 7-2. Uninstallation of the Generic HART-DTM
- 7-3. Uninstallation of the HART Communication DTM
- 7-4. Uninstallation of the Matsushima DTM
- 7-5. Uninstallation of the HART Modem Driver

- (c) 3-2. Installation of the PACTware package
- (d) 3-4. Installation of the HART Modem Driver
- (e) 4. Auto start setting
- (f) 5. Language setting

### **(3) In case of upgrading only "Matsushima DTM"**

It is assumed that "PACTware", "Generic HART - DTM", "HART Communication DTM", "Matsushima DTM", "HART Modem Driver" are already installed.

This is done when updating only "Matsushima DTM" to the latest version.

The following cases apply.

- When PACTware is shared with other company's DTM and PACTware can not be uninstalled.
- When the same PACTware is already installed.

Please do the following steps (a) - (d).

#### **(a) 7-4. Uninstallation of the Matsushima DTM**

Please uninstall Matsushima DTM currently installed.

Also delete the previously created startup file (=project file= "Matsushima DTM.PW \*").

#### **(b) 3-3. Installation of the Matsushima DTM**

#### **(c) 4. Auto start setting**

#### **(d) 5. Language setting**

### **3-1-3. Checking the Microsoft .NET Framework**

PACTware 5.0 uses Microsoft .NET Framework 3.5 and 4.0.

Microsoft.NET Framework 3.5 and 4.0 or higher installation is required.

#### **<For Windows Vista>**

Microsoft .NET Framework 3.5 and 4.0 are not installed as standard.

Microsoft.NET Framework 3.5 and 4.0 or higher installation is required.

"Control Panel"> "Programs and Functions". Check the currently installed programs.

Please check that "Microsoft .NET Framework 3.5" and "Microsoft .NET Framework 4. \*" are installed.

If it is not installed, Please connect to the Internet and do the Windows update program in "Control Panel"> "Windows Update".

If it is not installed even after running Windows update

Please download and install Microsoft .NET Framework 3.5 and 4.0 from the website of Microsoft.

#### **<For Windows 7>**

Microsoft.NET Framework 3.5 is installed as a standard

Microsoft .NET Framework 4.0 is not installed as standard.

Installation of Microsoft .NET Framework 4.0 or higher is required.

"Control Panel"> "Programs"> "Programs and Features" Check the currently installed programs.

"Microsoft .NET Framework 3.5" is installed as a standard and is not displayed.

Please check that "Microsoft .NET Framework 4. \*" are installed.

If it is not installed, Please connect to the Internet and do the Windows update program in "Control Panel"> "System and Security"> "Windows Update".

If it is not installed even after running Windows update

Please download and install Microsoft .NET Framework 4.0 from the website of Microsoft.

### <In the case of Windows 8, 10, 11>

Microsoft .NET Framework 3.5 is not installed as standard.

It is necessary to enable and install Microsoft.NET Framework 3.5 by "Windows features".

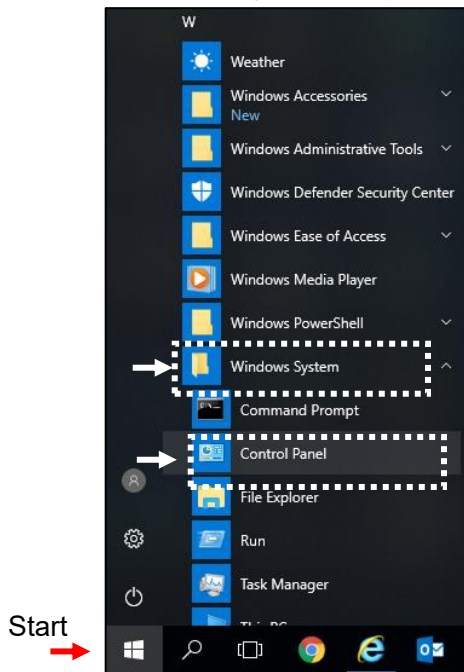
Some PCs already have Microsoft.NET Framework 3.5 enabled by "Windows features".

In this case, installation of Microsoft .NET Framework 3.5 is not necessary.

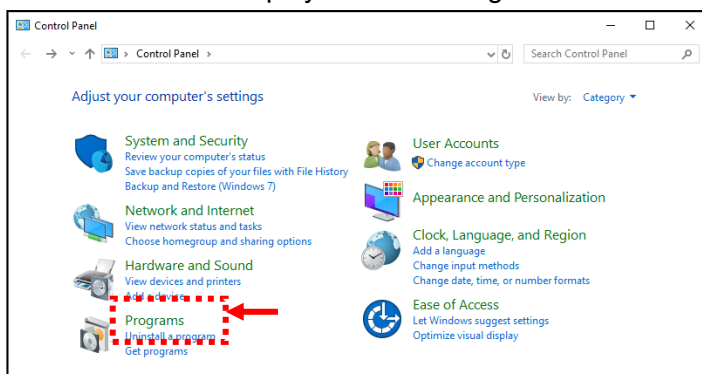
Microsoft.NET Framework 4.0 has 4.5 or higher installed as standard.

Please check "Turn Windows features on or off".

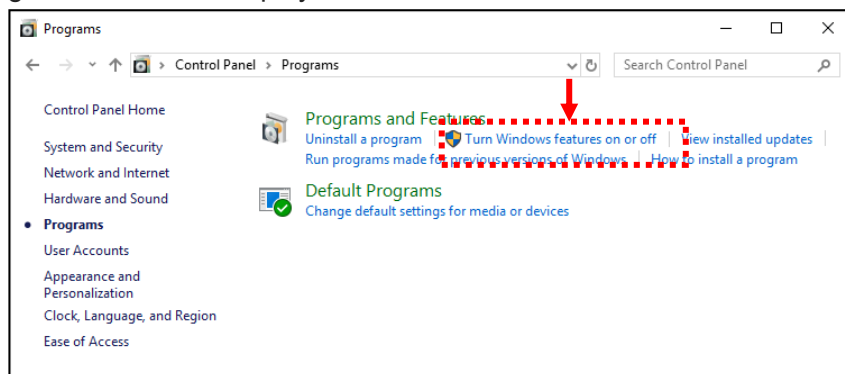
"Start">"Windows System">"Control Panel" Click "Control Panel".



"Control Panel" screen is displayed. Click "Programs".

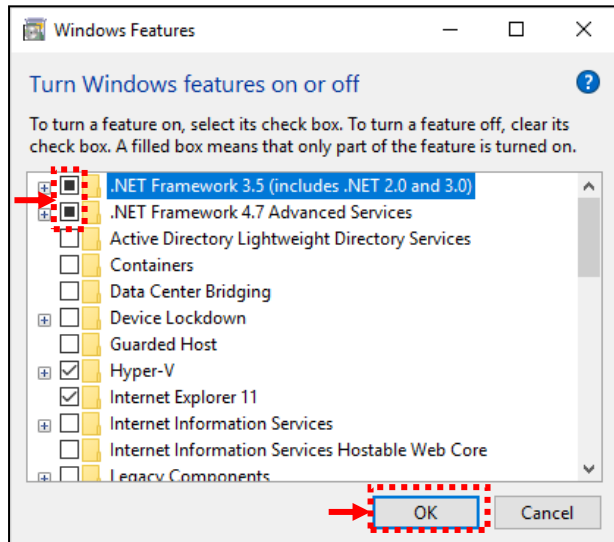


"Programs" screen is displayed. Click "Turn Windows features on or off".



"Turn Windows features on or off" screen is displayed.

Please check that ".NET Framework 3.5(includes.NET 2.0 and 3.0)" and ".NET Framework 4.\* Advanced Services" are checked.



If the above 2 items are not checked, please connect to the Internet, check the above 2 items and click "OK". The confirmation screen is displayed. Click "Download files from Windows Update". Download and installation will start. Please check again after installation.

If they are not checked, Please connect to the Internet and do the Windows update program In "Windows Update".

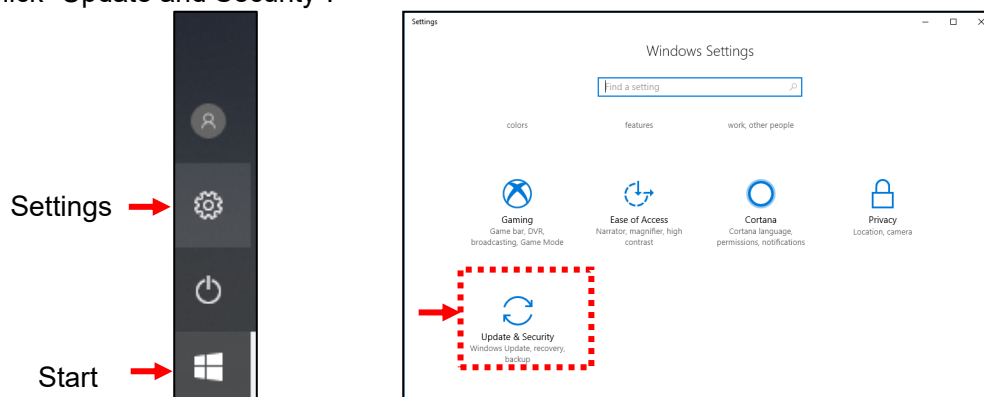
If it is not installed even after running Windows update

Please download and install Microsoft .NET Framework 3.5 from the website of Microsoft.

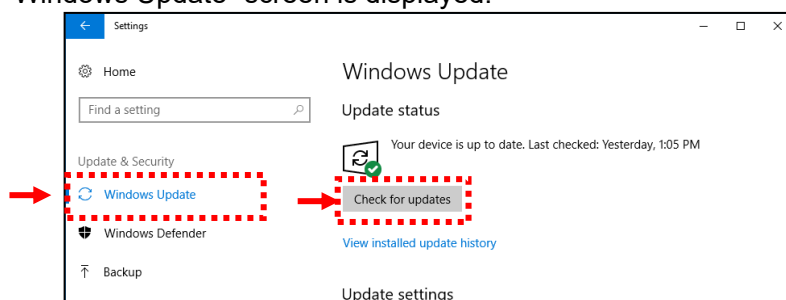
<"Windows Update" method>

Click "Start"> "Setting button" to display the "Windows setting" screen

Click "Update and Security".



"Windows Update" screen is displayed.



Click "Check for updates" in "Windows Update".

If there is an update program will be installed automatically.

### 3-2. Installation of the PACTware package

The PACTware package includes the following four programs

When you run setup, the following four programs are sequentially installed.

- (1) PACTware 5.0
- (2) Generic HART-DTM
- (3) HART Communication DTM
- (4) Matsushima DTM

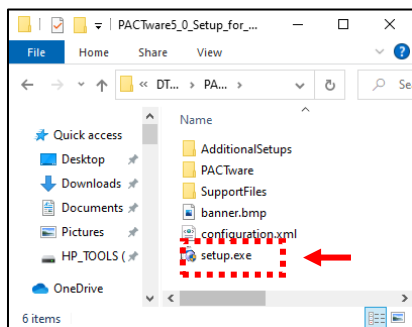
#### (1). Installation of the PACTware

Please insert the attached CD "DTM\_Install\_Disc\_Ver 2 \_ \* \_ \*\*\*" into the CD drive.

Please double-click the file "setup.exe"

in the folder "PACTware5\_0\_Setup\_for\_MWLM-PR26\_HART\_DTM\_V2\_ \* \_ \*\*\*"

in the attached CD "DTM\_Install\_Disc\_Ver2 \_ \* \_ \*\*\*".



¥ DTM\_Install\_Disc\_Ver2\_ \* \_ \*\*

¥ PACTware5\_0\_Setup\_for\_MWLM-PR26\_HART\_DTM\_V2\_ \* \_ \*\*

¥ setup.exe

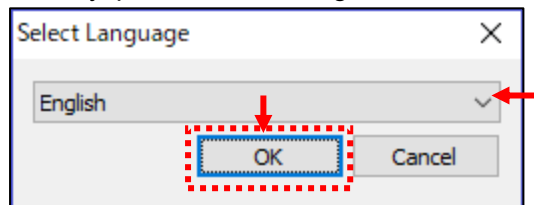
For Windows 8, 10, and 11 The message screen is displayed.

("Do you want to allow this app from an unknown publisher to make changes to your device?")

Please click "Yes".

The language selection screen is displayed. Please select the desired language and click "OK".

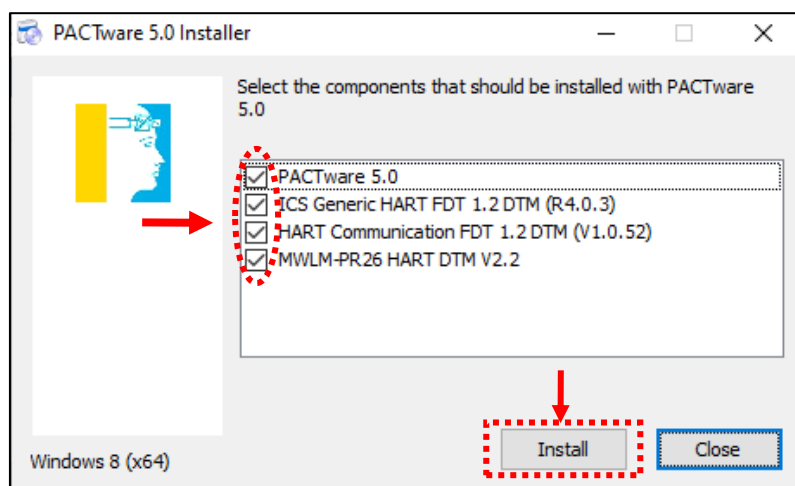
Usually, please select "English".



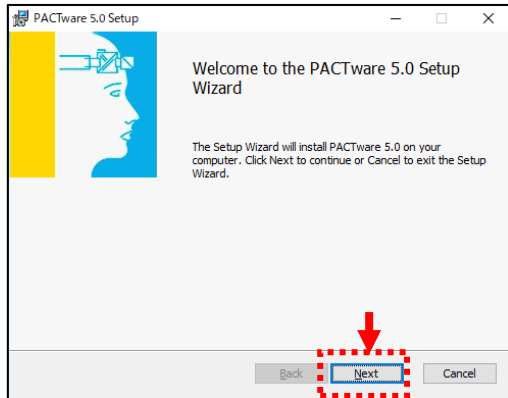
The installation software selection screen is displayed.

Please check all check boxes and click "Install".

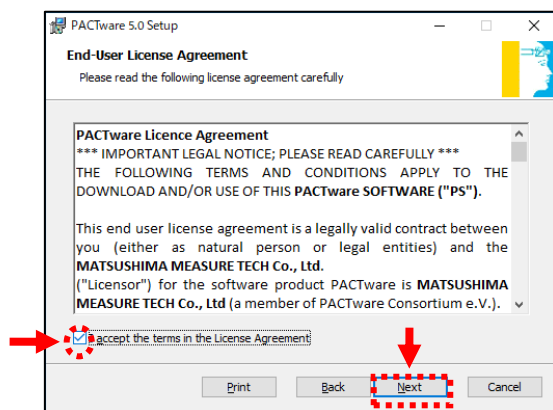
Items already installed are unchecked.



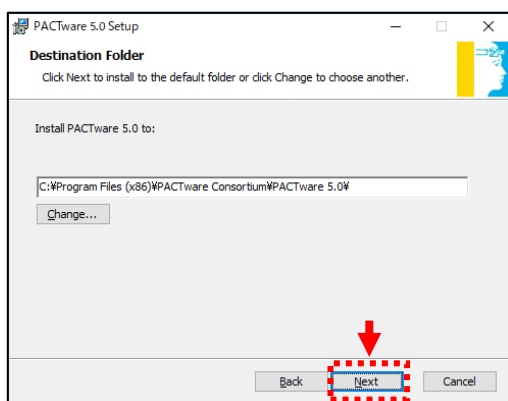
Preparation for installation begins. After completion of preparation, the following setup screen will be displayed. Please click "Next".



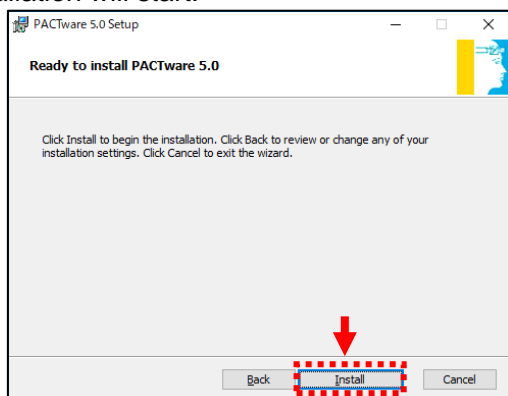
The license agreement is displayed. After confirming the contents of the license agreement Check "I accept the terms of the License Agreement" Please click "Next".



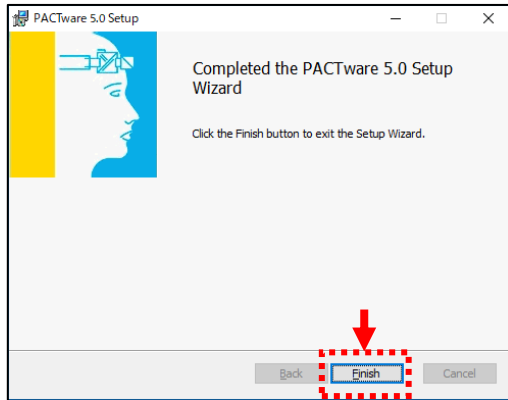
The confirmation screen of the folder to be installed is displayed. Please click "Next".



The installation start screen is displayed. Click "Install".  
Installation will start.



When the installation is completed, the installation finished screen will be displayed.  
Please click "Finish" to finish the installation.

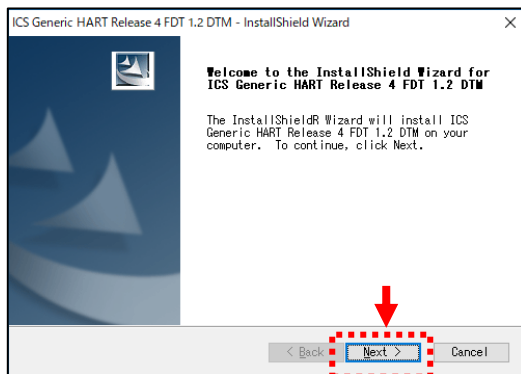


After installing PACTware, (2) installation of the Generic HART - DTM will be started.

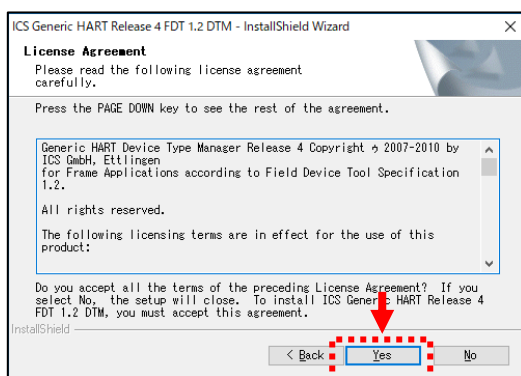
## (2). Installation of the Generic HART-DTM

(1) After installing PACTware, the following setup screen will be displayed.

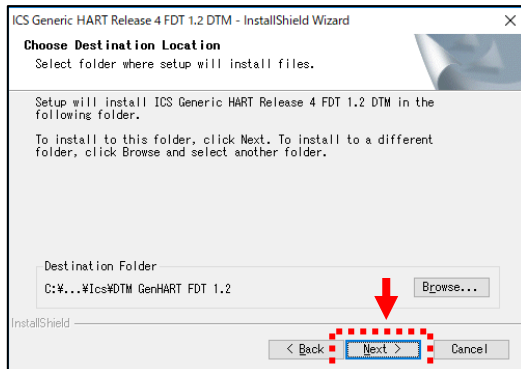
Please click "Next".



The license agreement is displayed. After confirming the contents of the license agreement, "YES" (agree) Please click.



The confirmation screen of the folder to be installed is displayed. Please click "Next".



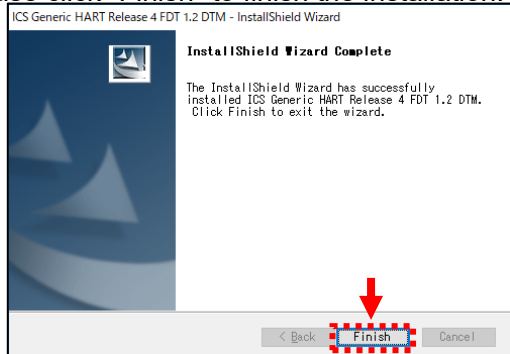
\* Do not change the installation location.

If changed, there is a possibility that it will not operate normally.

Click "Next" to start the installation of Generic HART - DTM.

When the installation of Generic HART - DTM is completed, the installation completion screen is displayed.

Please click "Finish" to finish the installation.

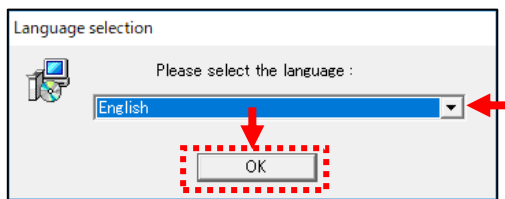


After installation is complete, (3) Installation of the HART Communication DTM will be started.

### (3). Installation of the HART Communication DTM

(2) After completing installation of the Generic HART - DTM, the following language selection screen will be displayed. Please select the desired language and click "OK".

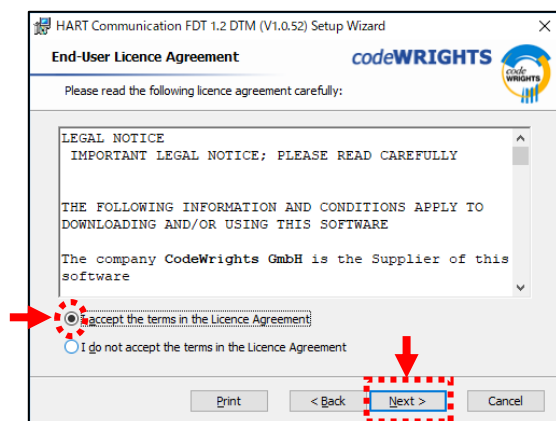
Usually, please select "English".



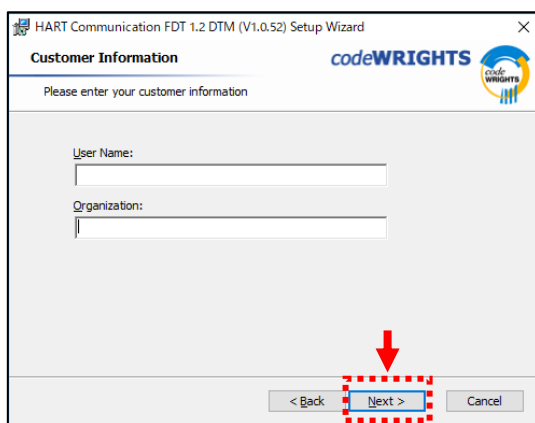
The following setup screen will be displayed. Please click "Next".



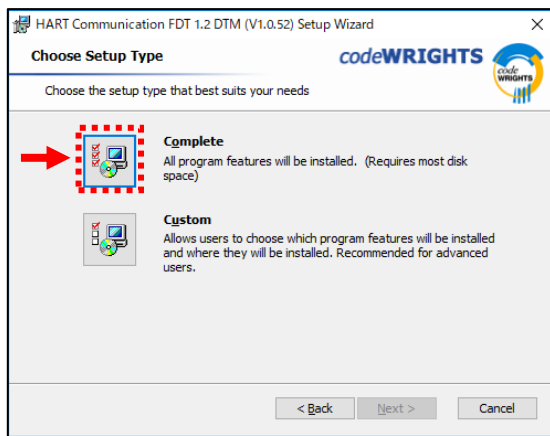
The license agreement is displayed. After confirming the contents of the license agreement, Check "I accept the terms in the license agreement" Please click "Next".



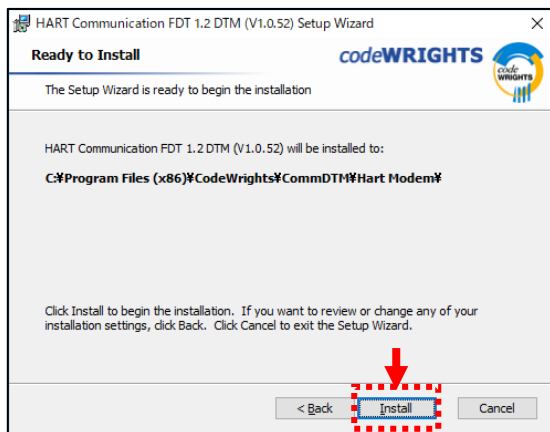
The screen for entering customer information is displayed. Enter your "User Name" and "Organization" Please click "Next".



The setup type selection screen is displayed. Please click "Complete".



The installation confirmation screen will be displayed. Click "Install".



Click "Install" to start installation of HART Communication DTM.

After the HART Communication DTM installation is completed, an exit screen will be displayed.

Please click "Finish" to finish the installation.

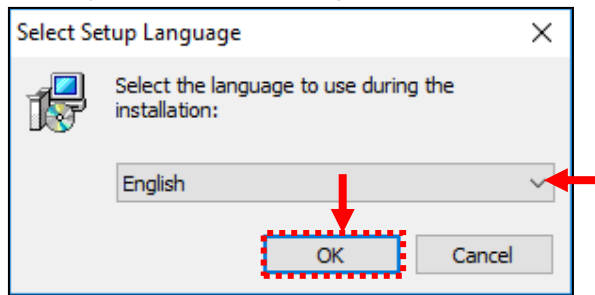


After installation is complete, (4) Installation of the Matsushima DTM will be started.

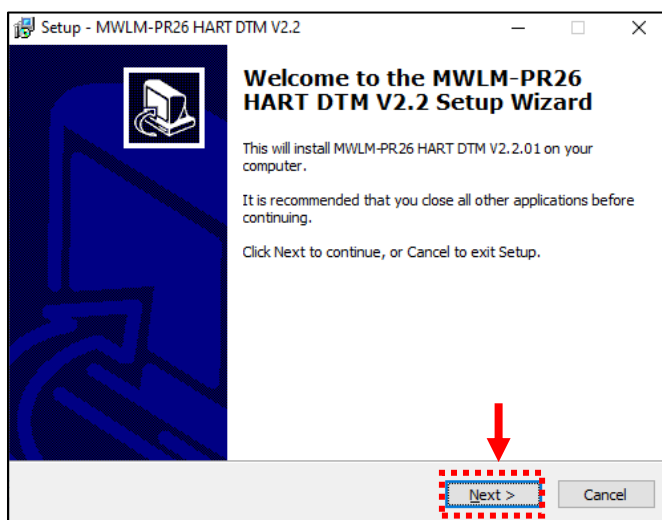
#### (4). Installation of the Matsushima DTM

(3) After completing installation of the HART Communication DTM, the following language selection screen will be displayed. Please select the desired language and click "OK".

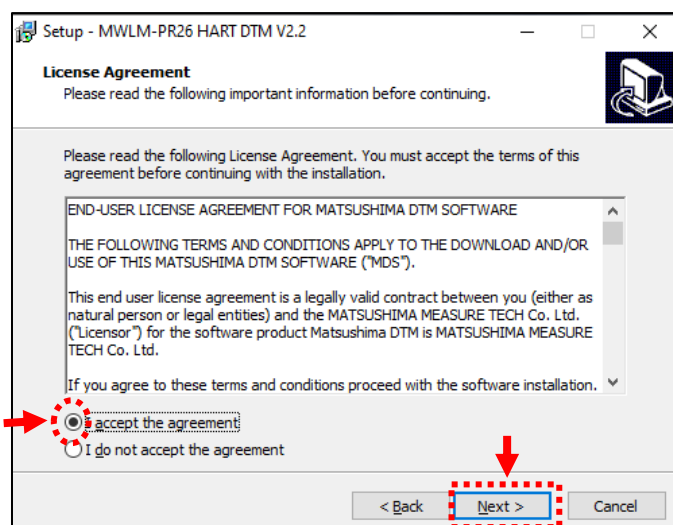
Usually, please select "English".



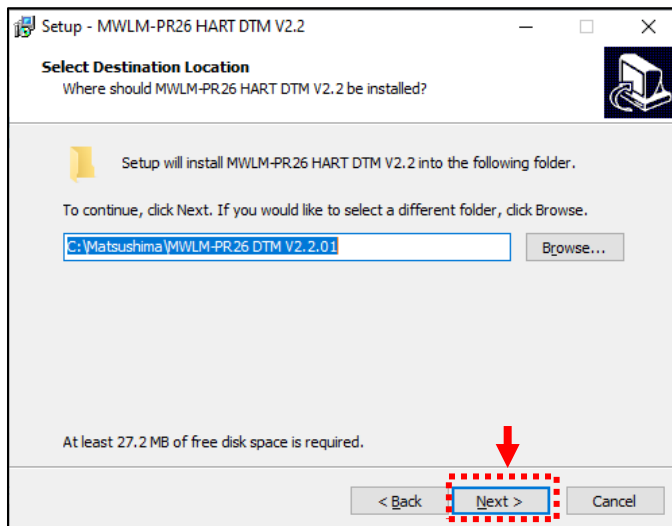
The following setup screen will be displayed. Click "Next >".



The license agreement is displayed. After confirming the contents of the license agreement, Please check "I accept the agreement" and click "Next >".



The confirmation screen of the folder to be installed is displayed. Click "Next >".



\* Do not change the installation location.  
If changed, there is a possibility that it will not operate normally.

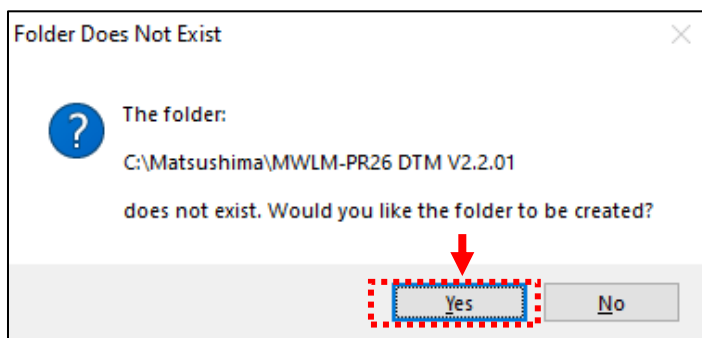
The folder to install is "C: ¥ Matsushima ¥ MWLM - PR26 DTM V2. \*. \*\*\*".

Folder check will be done when installing Matsushima DTM.

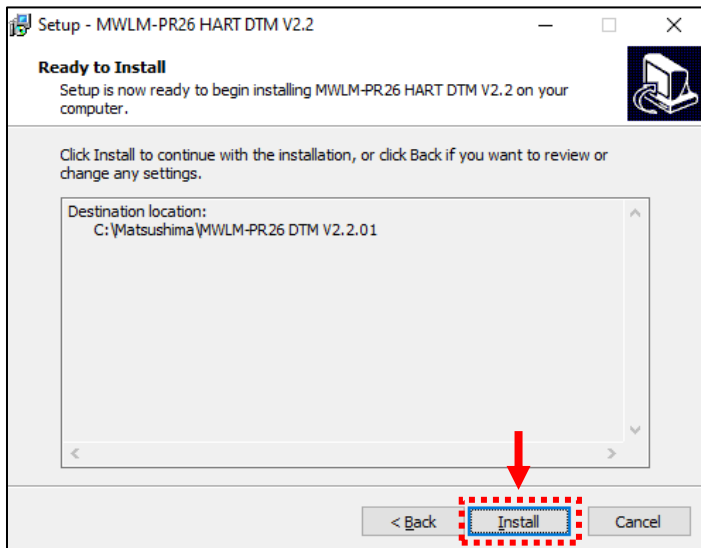
If the folder does not exist, the following screen will be displayed.

If the following screen is displayed, please click "Yes".

A folder of C: ¥ Matsushima ¥ MWLM - PR26 DTM V2. \*. \*\* will be created.



The installation confirmation screen will be displayed. Click "Install (I)".



Click "Install" to start installing Matsushima DTM.

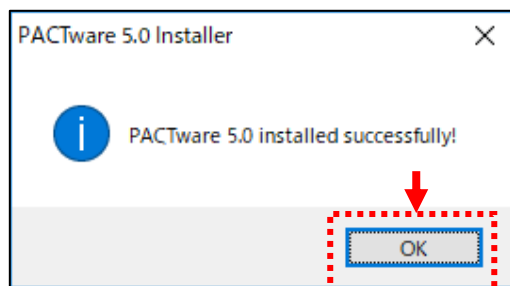
After the installation of Matsushima DTM, the exit screen will be displayed.

Please click "Finish" to finish the installation.



The installation completion screen of PACTware is displayed.

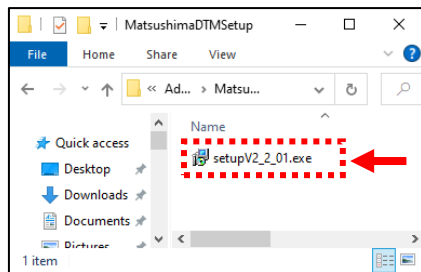
Please click "OK" to complete installation of PACTware.



### 3-3. Installation of the Matsushima DTM

This operation is done when installing only "Matsushima DTM".

Please double-click the file "setupV2\_\*.exe" in the folder "MatsushimaDTMSetup" in the folder "AdditionalSetups" in the folder PACTware5\_0\_Setup\_for\_MWLM-PR26\_HART\_DTM\_V2\_\*.\*\*\*" in the attached CD "DTM\_Install\_Disc\_Ver2\_\*.\*\*\*".

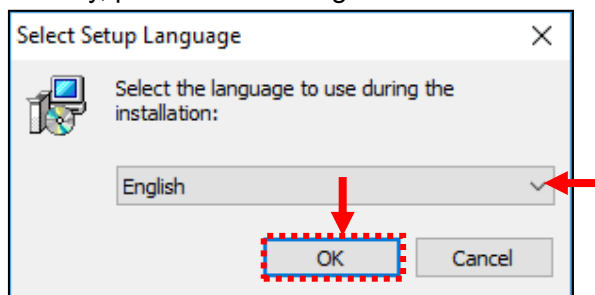


¥ DTM\_Install\_Disc\_Ver2\_\*.\*\*\*  
¥ PACTware5\_0\_Setup\_for\_MWLM-PR26\_HART\_DTM\_V2\_\*.\*\*\*  
¥ AdditionalSetups  
¥ MatsushimaDTMSetup  
¥ setupV2\_\*.\*\*\*

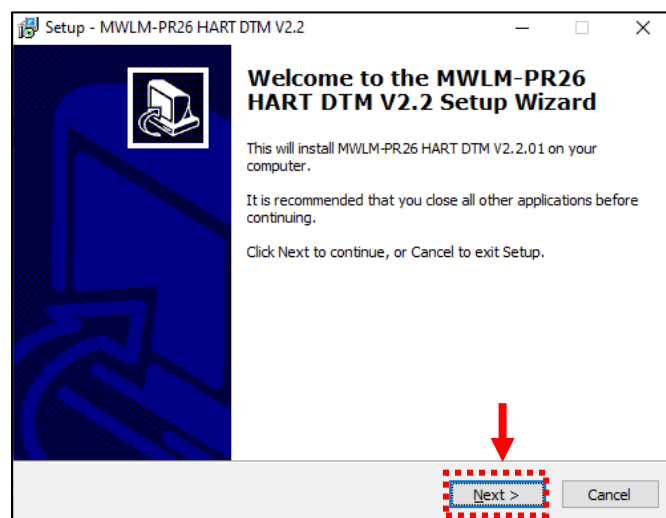
For Windows 8, 10, and 11 The message screen is displayed.

("Do you want to allow this app from an unknown publisher to make changes to your device?")  
Please click "Yes".

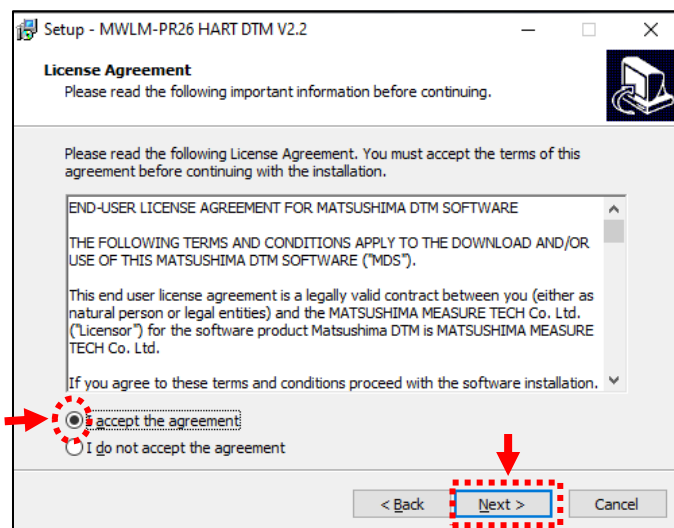
The language selection screen is displayed. Please select the desired language and click "OK".  
Usually, please select "English".



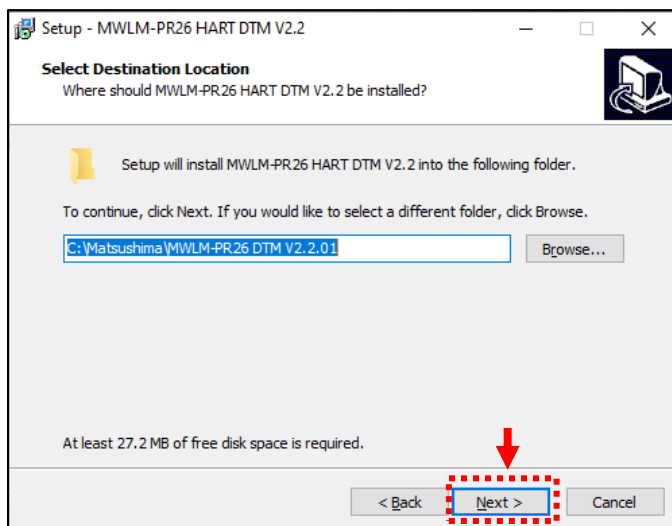
The following setup screen will be displayed. Click "Next >".



The license agreement is displayed. After confirming the contents of the license agreement, Please check "I accept the agreement" and click "Next >".



The confirmation screen of the folder to be installed is displayed. Click "Next >".



\* Do not change the installation location.  
If changed, there is a possibility that it will not operate normally.

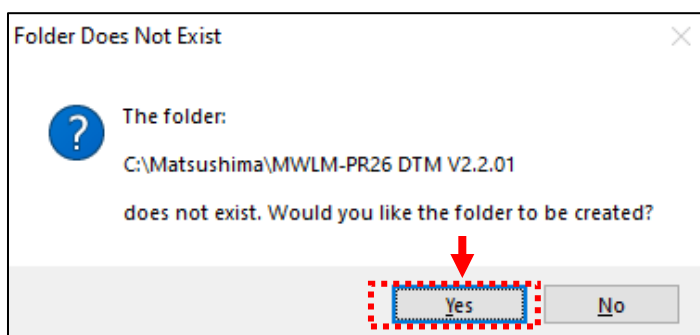
The folder to install is "C: ¥ Matsushima ¥ MWLM - PR26 DTM V2. \*. \*\*\*".

Folder check will be done when installing Matsushima DTM.

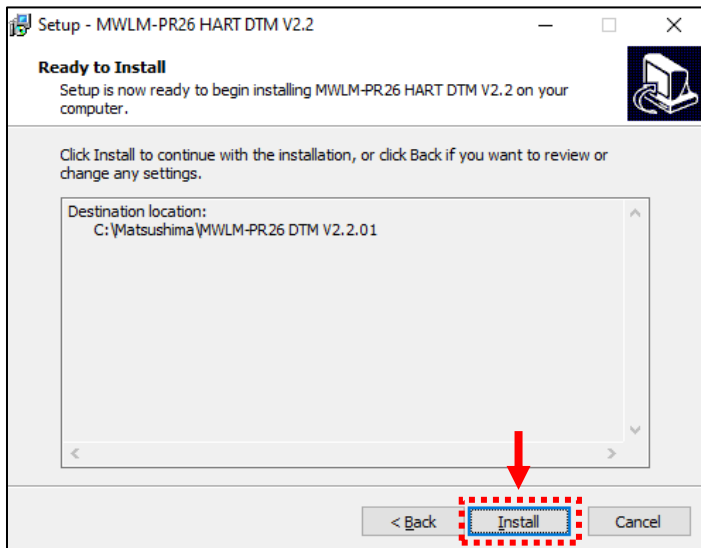
If the folder does not exist, the following screen will be displayed.

If the following screen is displayed, please click "Yes".

A folder of C: ¥ Matsushima ¥ MWLM - PR26 DTM V2. \*. \*\* will be created.



The installation confirmation screen will be displayed. Click "Install (I)".



Click "Install" to start installing Matsushima DTM.

After the installation of Matsushima DTM, the exit screen will be displayed.

Please click "Finish" to complete installation of Matsushima DTM.

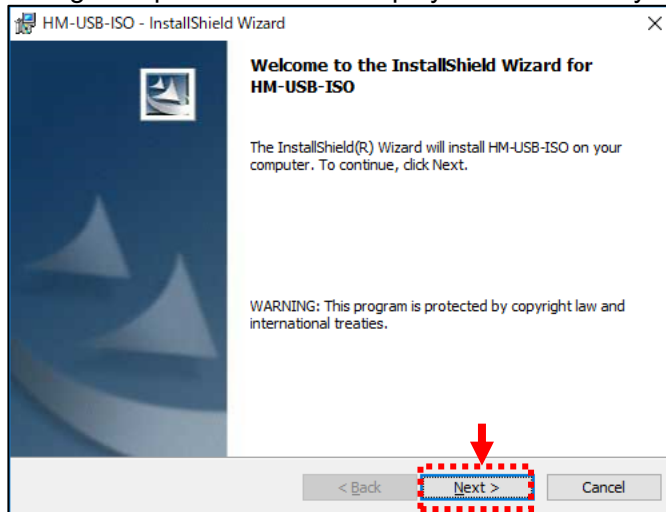


### 3-4. Installation of the HART Modem Driver

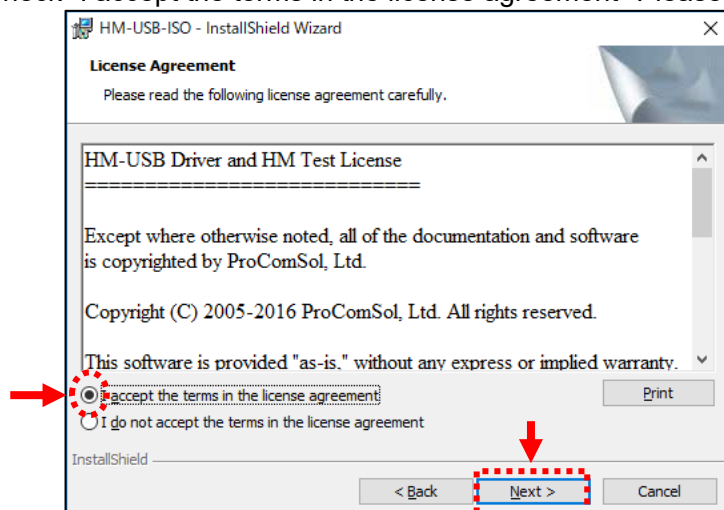
Drivers to be installed differ depending on HART modem. Please install according to steps 3-4-1 for MHM-01 and 3-4-2 for MHM-02.

#### 3-4-1. In the case of MHM-01

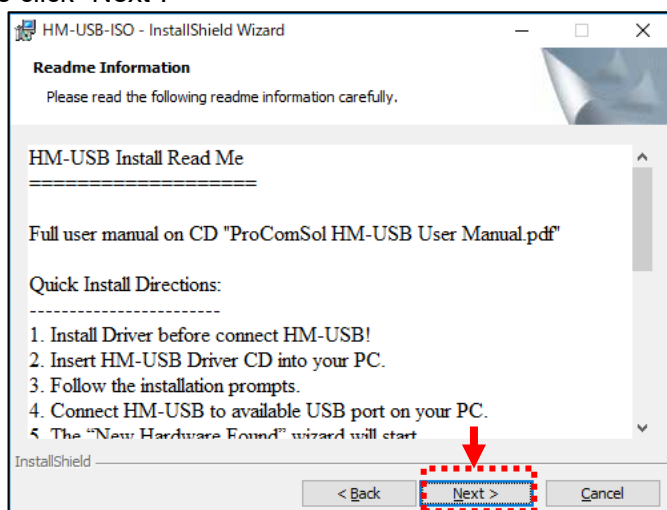
Please insert the attached driver CD "USB Virtual Serial Port Driver (Rev 5.6 or higher)" into the CD drive. The following set up screen will be displayed automatically. Please click "Next".



The license agreement is displayed. After confirming the contents of the license agreement, Check "I accept the terms in the license agreement" Please click "Next".



Installation notes are displayed. After confirming the contents of installation notes, Please click "Next".

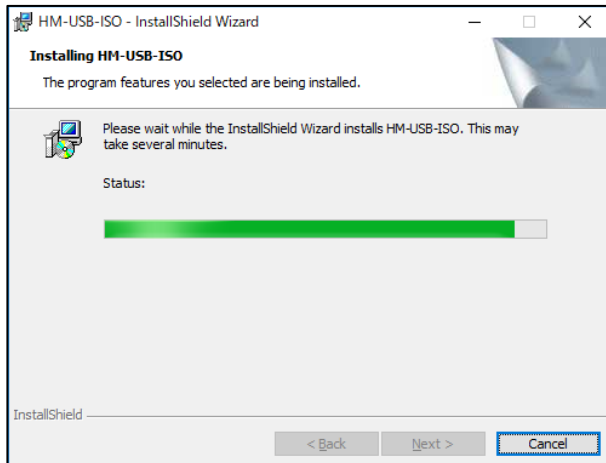


For Windows 8, 10, and 11 The message screen is displayed.

("Do you want to allow this app from an unknown publisher to make changes to your device?")

Please click "Yes".

Installation preparation starts automatically. Wait for a while because it may take time.



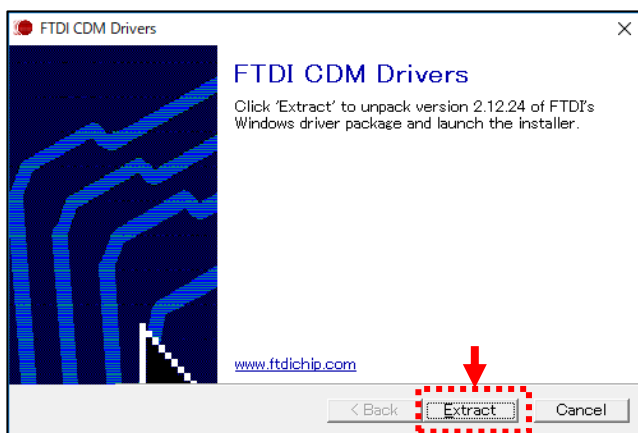
Since the driver software is hidden in the task bar, please check the task bar.

Click the icon on the task bar.



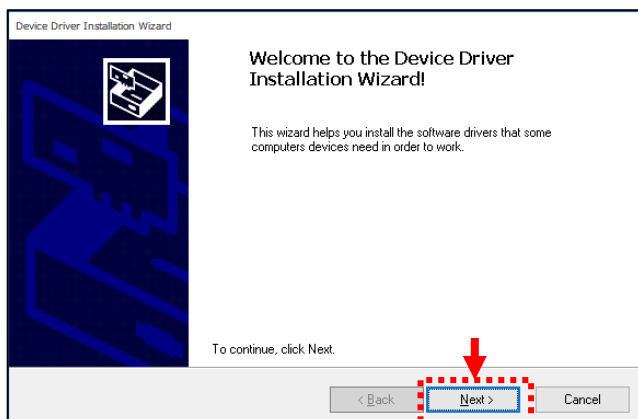
A confirmation screen for starting the installer is displayed.

Please click "Extract".

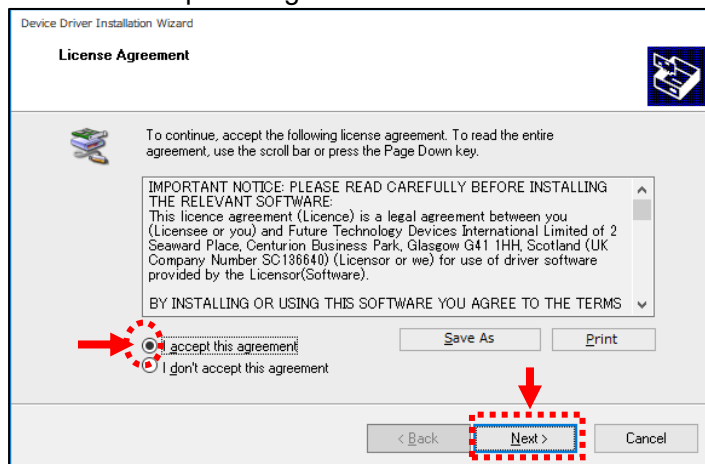


The device driver installation confirmation screen is displayed.

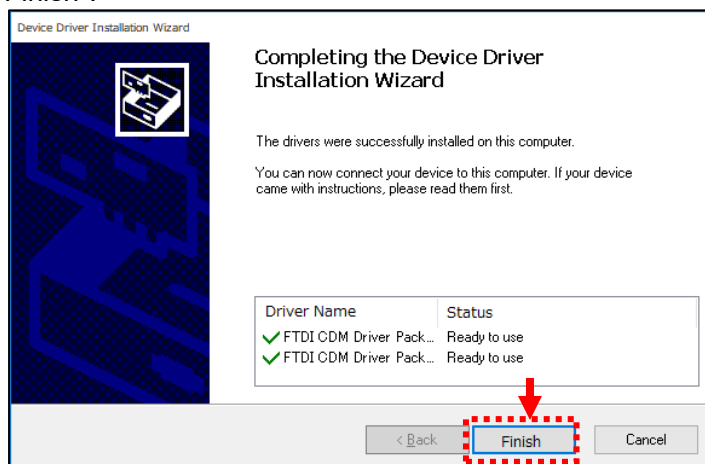
Please click "Next".



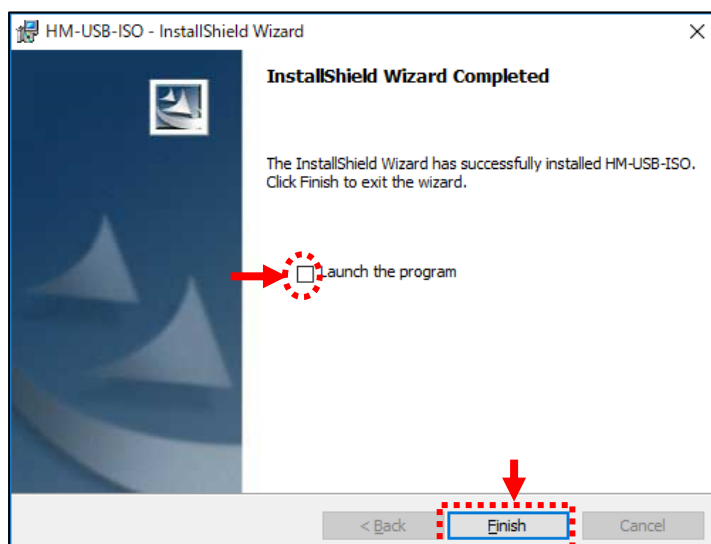
The license agreement is displayed. After confirming the contents of the license agreement, Please check "I accept this agreement" and click "Next".



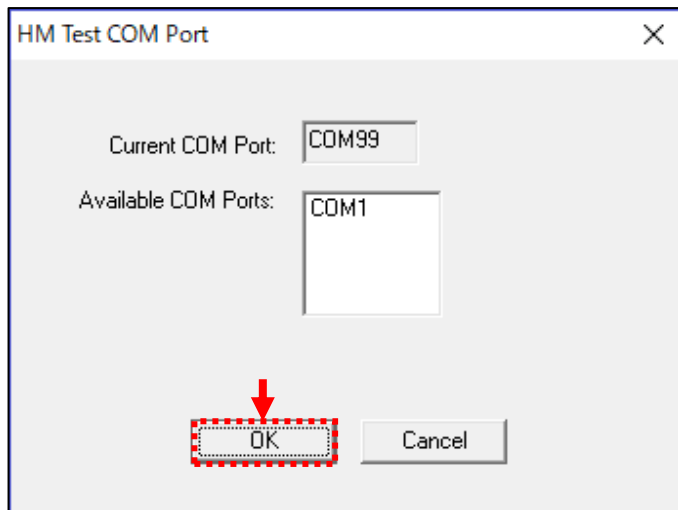
The installation completion screen of the device driver is displayed. Click "Finish".



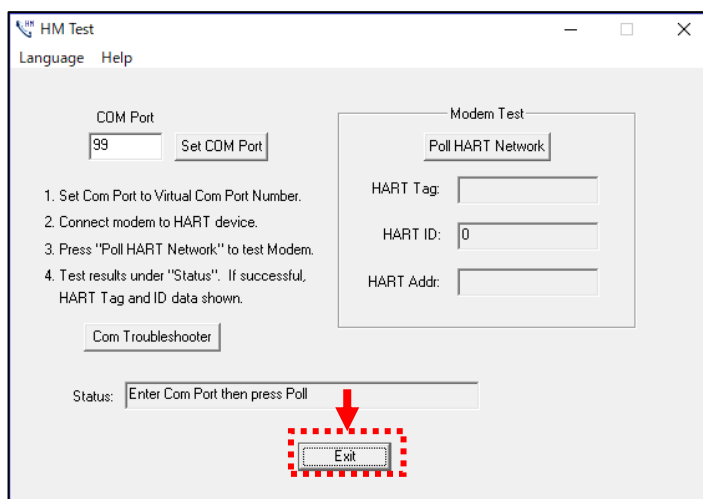
The exit screen is displayed.  
Uncheck "Launch the Program" and click "Finish"  
Please complete installation of HART modem driver.



When "Launch the Program" is checked  
Click "Finish", the following screen will be displayed.  
Please click "OK".

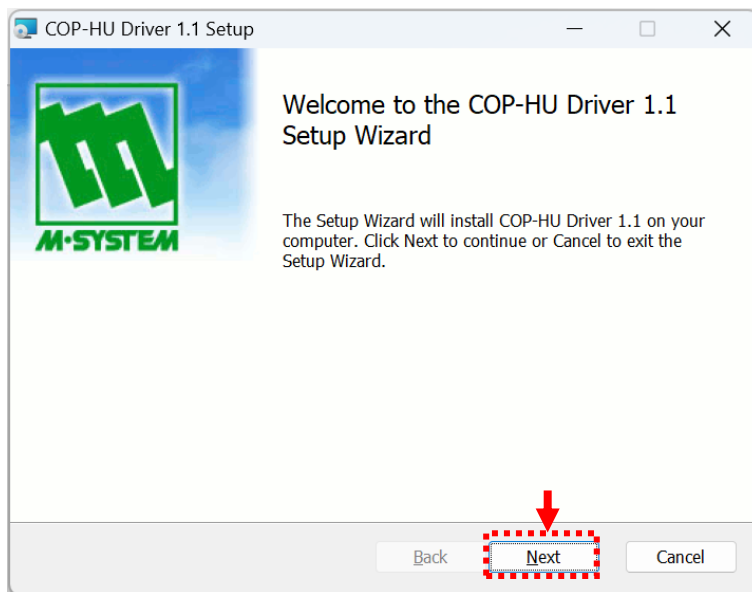


Click "OK", the following test screen will be displayed.  
Please click "Exit" to finish.



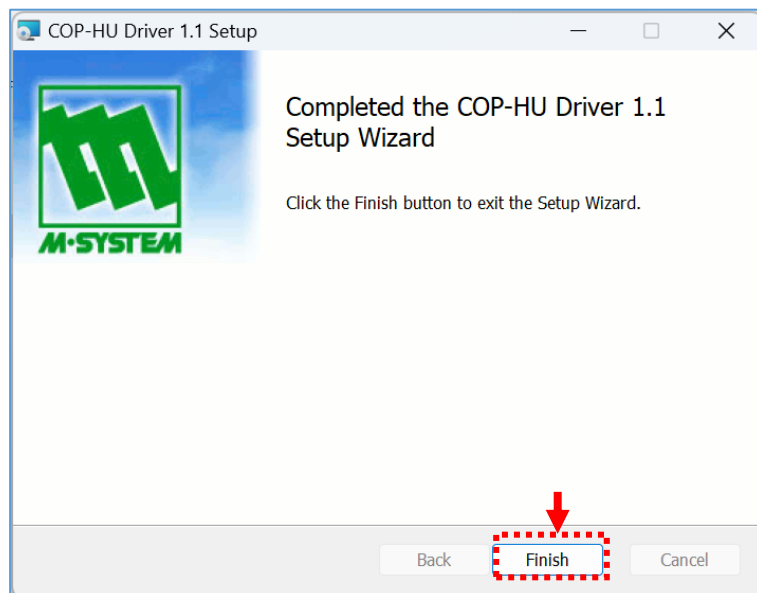
### 3-4-2. In the case of MHM-02

Please insert the attached driver CD "USB Virtual Serial Port Driver (Rev.3 or higher)" into the CD drive. The following set up screen will be displayed automatically. Please click "Next".



For Windows 8, 10, and 11 The message screen is displayed.  
("Do you want to allow this app from an unknown publisher to make changes to your device?")  
Please click "Yes".

The device driver installation confirmation screen is displayed.  
Please click "Install".



The installation completion screen of the device driver is displayed.  
Click "Finish".

## 4. Auto start settings

The auto start settings are settings to activate only Matsushima DTM using desktop icon.

\*Before making this setting, connect the HART modem (MHM-01 or MHM-02) to be used to the USB port of the PC.

If it is not connected, since the COM port number is not displayed when setting the communication DTM, Be sure to connect.

\*Double-click the desktop icon (PACTware) without doing this setting

Or when you start PACTware with "start"> "program"> "PACTware"

If you start up in the initial screen or if you are using a third party DTM

Other company's DTM may start up.

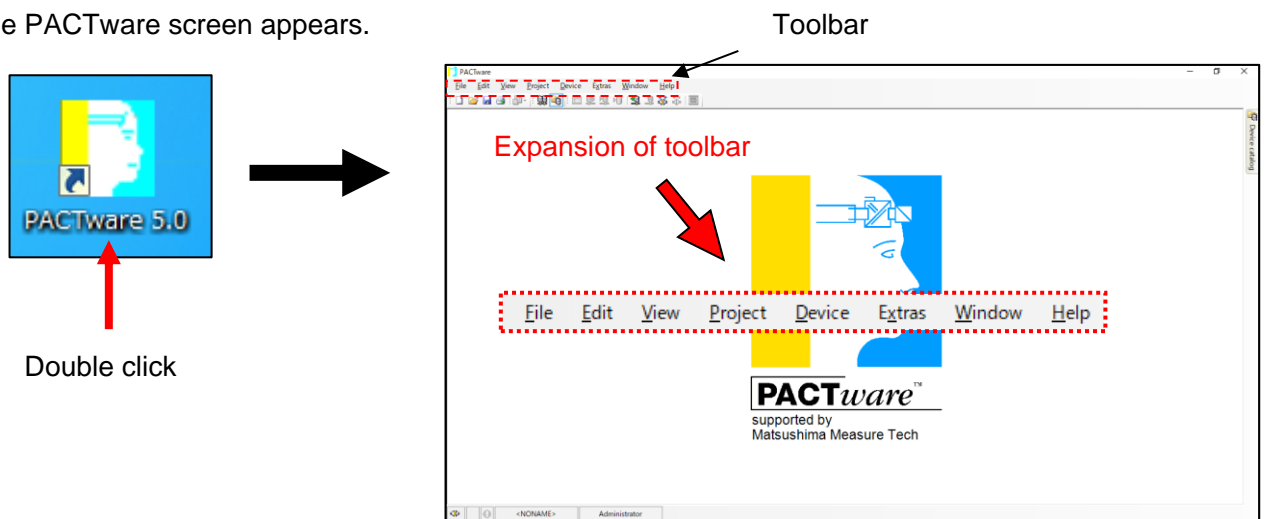
In this setting, to distinguish it from other company's DTM, create icon of PACTware project file of Matsushima DTM, It is setting to activate Matsushima DTM by double clicking on that icon.

Please make sure to set up the following 4-1 to 4-4.

### 4-1. Starting PACTware

Double click on desktop icon (PACTware).

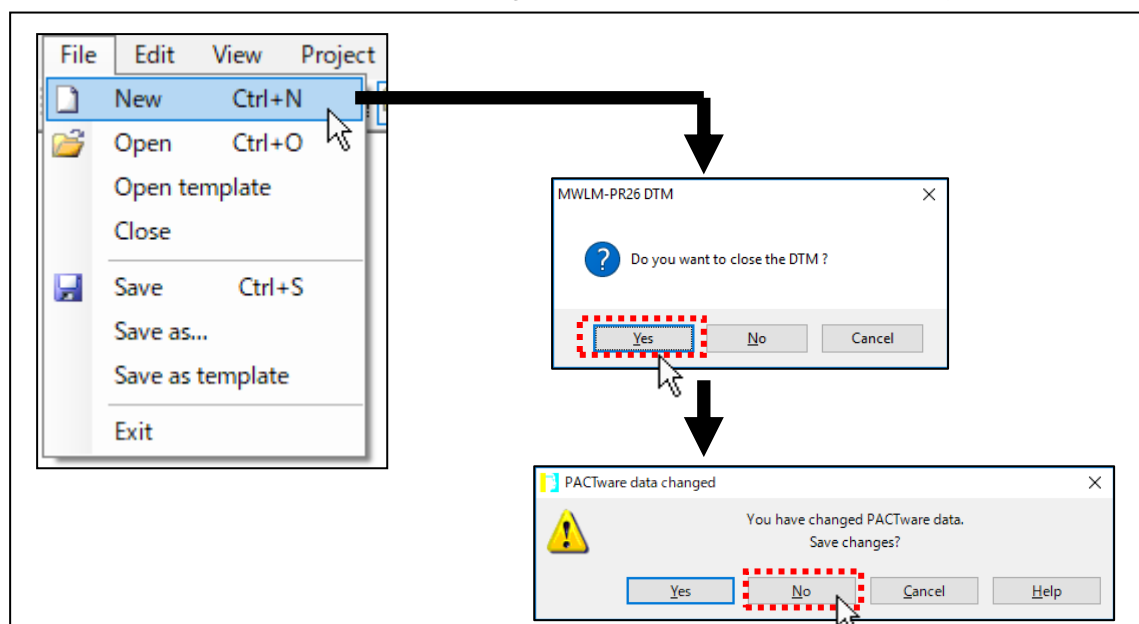
The PACTware screen appears.



Click New in the toolbar "File".

If another DTM is already running, a confirmation screen will be displayed. Click Yes.

After that, please click No because the saving confirmation screen will be displayed.



## 4-2. Confirmation of the device catalog

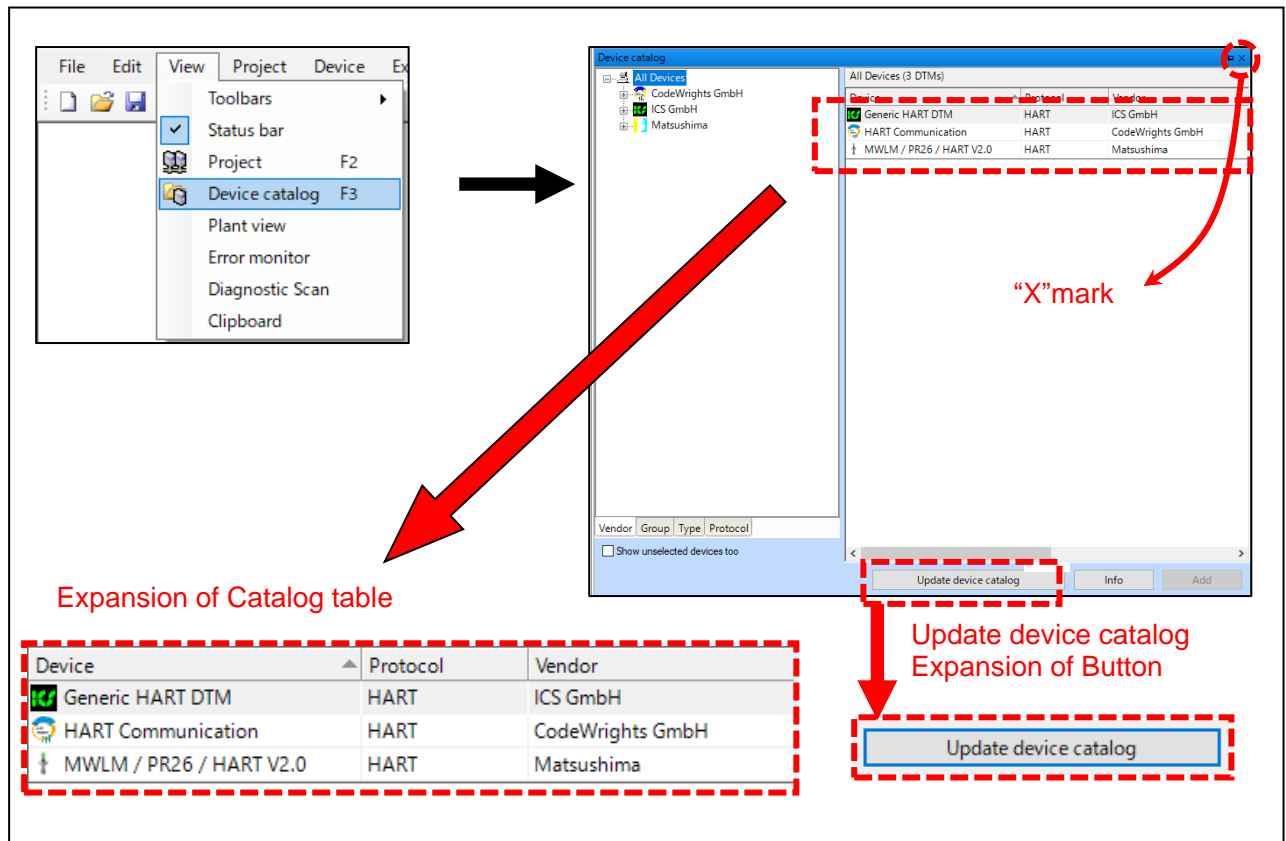
### (1) Confirmation of the device catalog

Click "Device catalog F3" in the toolbar "View".The "Device catalog screen" is displayed.

(\* When "Device catalog screen" is already displayed, "Device catalog F3"Clicking it will disappear the "Device catalog screen".In that case, click "Device catalog F3" again on the toolbar "View" and Please display "Device catalog screen". )

"Generic HART DTM" "HART Communication" "MWLM / PR 26 / HART" in the table of Catalog

Please confirm that 3 kinds of are displayed.



When installing or upgrading

Click the Update device catalog button under "Device catalog" Please update "Device catalog".

The confirmation button will be displayed, please click the Yes button. Update "Device catalog".

As a result of updating, please confirm that 3 kinds are displayed in the table of "catalog".

After confirmation, please close the screen by clicking "x" in "Device catalog".

(\*If you do not close "Device catalog", (4) Save a project (see page 36) When saving the file,

It will be saved with "Device catalog" displayed. When using a personal computer with a small screen Size, "Matsushima DTM" display area becomes narrow and it may be hard to see. )

#### \*If "MWLM/PR26/HART" is not displayed.

There is a possibility that you have not done restarted the PC when there was an instruction to restart the PC at the time of installation, execute 4-4.Termination of the program and terminate PACTware and Please restart the PC. When reconfirming, please execute from 4-1.Starting PACTware.

#### \*If "MWLM/PR26/HART" is not displayed in the "catalog" table even if the PC is restarted,

Execute 4-4.Termination of the program and terminate PACTware and

Please execute (3) Installation of the Microsoft MSXML.

When reconfirming, please execute from 4-1.Starting PACTware.

## (2) Confirmation of the Matsushima DTM Version

Execute when version upgrading Matsushima DTM.

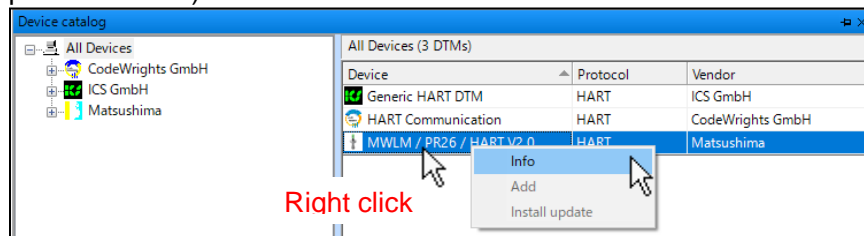
Click "Device catalog F3" in the toolbar "View".The "Device catalog screen" is displayed.

Click the Update device catalog button under "Device catalog" Please update "Device catalog".

The confirmation button will be displayed, please click the Yes button. Update "Device catalog".

Please confirm that "MWLM/PR26/HART" is the same as the latest version (attached CD title Ver \*. \*. \*\*).

(Example: Ver 2.0.00)



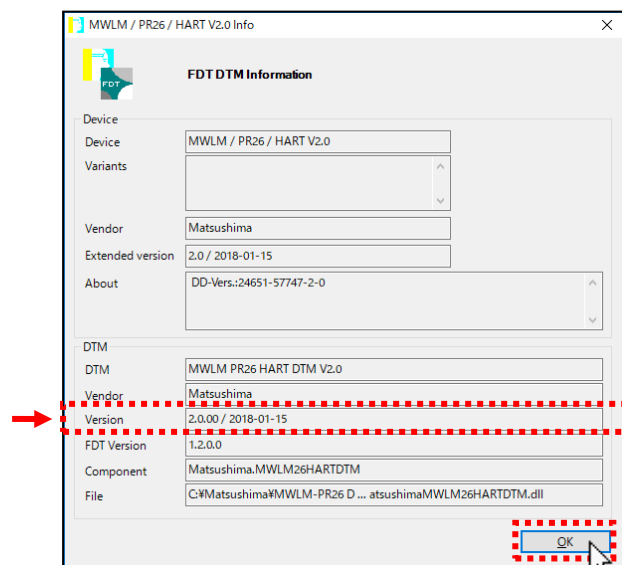
Right-click "MWLM/PR26/HART" on the "Device catalog" screen and click "Info".

The information screen of "MWLM/PR26/HART" is displayed.

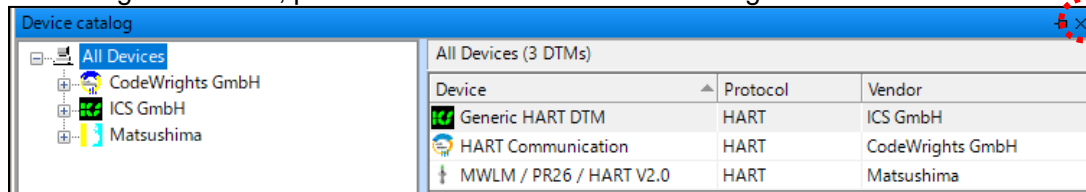
Please confirm that DTM Version item is the same as the latest version (attached CD title Ver \*. \*. \*\*).

(Example: Ver 2.0.00)

Please click "OK" after confirmation is completed. The information screen of "MWLM/PR26/HART" disappears.



After checking the version, please click the "x" in "Device catalog" and close the screen.



### \*If the latest version is not displayed

Execute 4-4.Termination of the program and terminate PACTware and execute 3-3 Installation of the Matsushima DTM and Please Install the latest version.

### \*If the old version is displayed

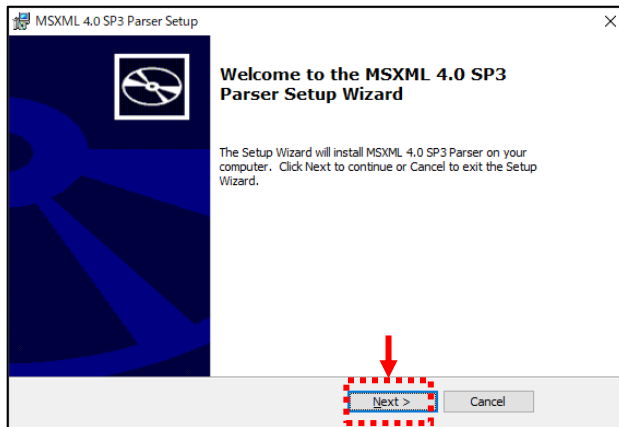
Execute 4-4.Termination of the program and terminate PACTware and execute 7-4. Uninstallation of the Matsushima DTM and Please uninstall the old version.

When reconfirming, please execute from 4-1.Starting PACTware.

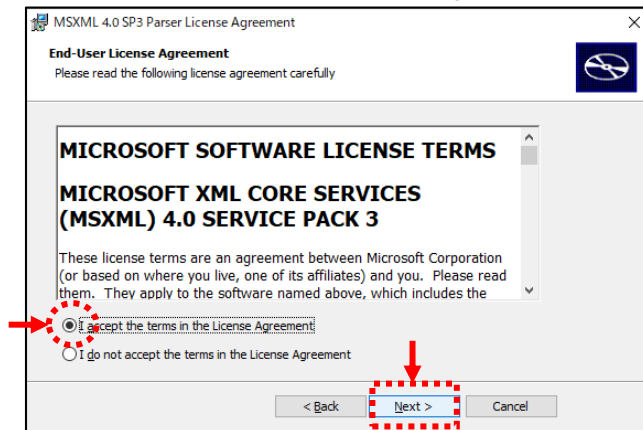
### (3) Installation of the Microsoft MSXML

This is done when "MWLM/PR26/HART" is not displayed in 4-2.(1)confirmation of the device catalog.  
Please install MSXML4.0 SP3 Parser (msxml.msi).

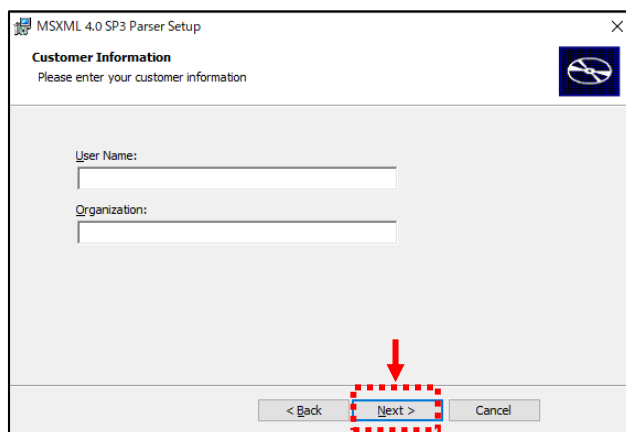
Double click "msxml.msi". The "MSXML" setup screen will be displayed.



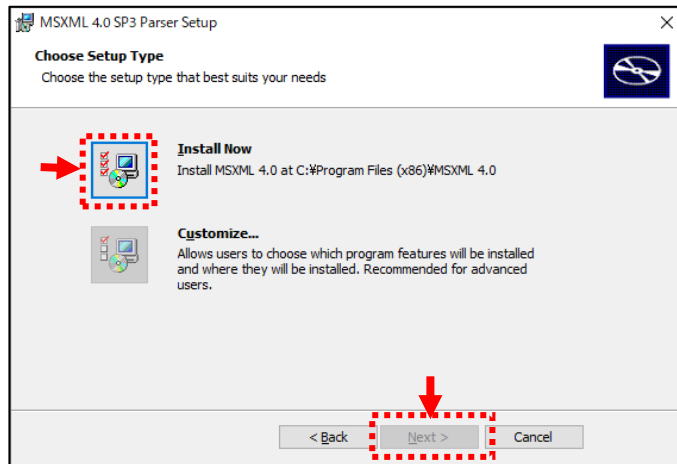
A license agreement is displayed. After confirming the contents of the license agreement, Check "I accept the terms in the License Agreement" and Please click "Next".



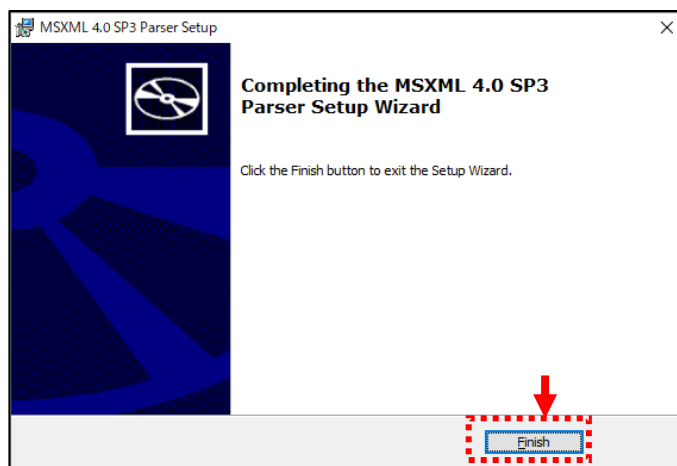
The screen for entering customer information is displayed. Enter your "User Name" and "Organization" and Please click "Next".



The setup selection screen is displayed.  
Select "Install Now" and click "Next".  
Installation starts automatically when clicked.



After installing "MSXML", the exit screen will be displayed.  
Please click "Finish" to complete installation of "MSXML".

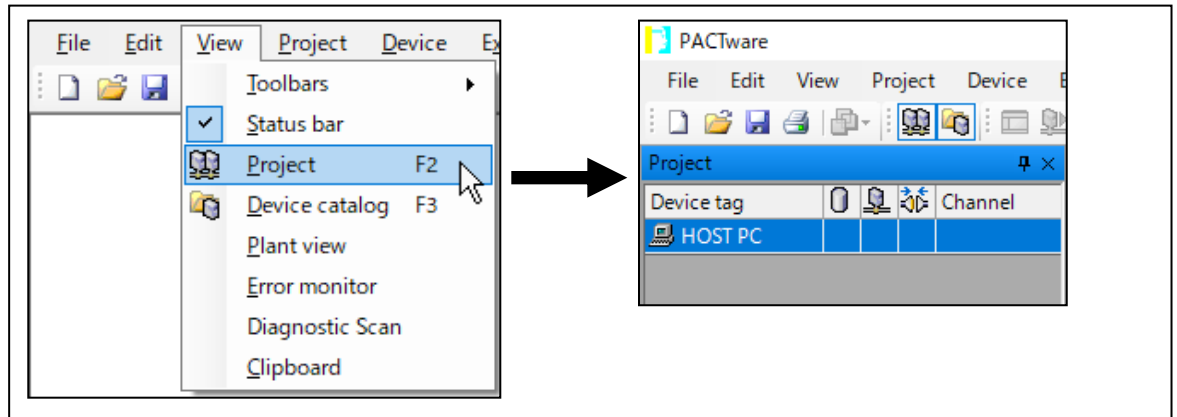


### 4-3. Create a project

#### (1) Setting of the communication DTM

Click "Project F2" in the toolbar "View". The Project screen is displayed on the left side of the screen.

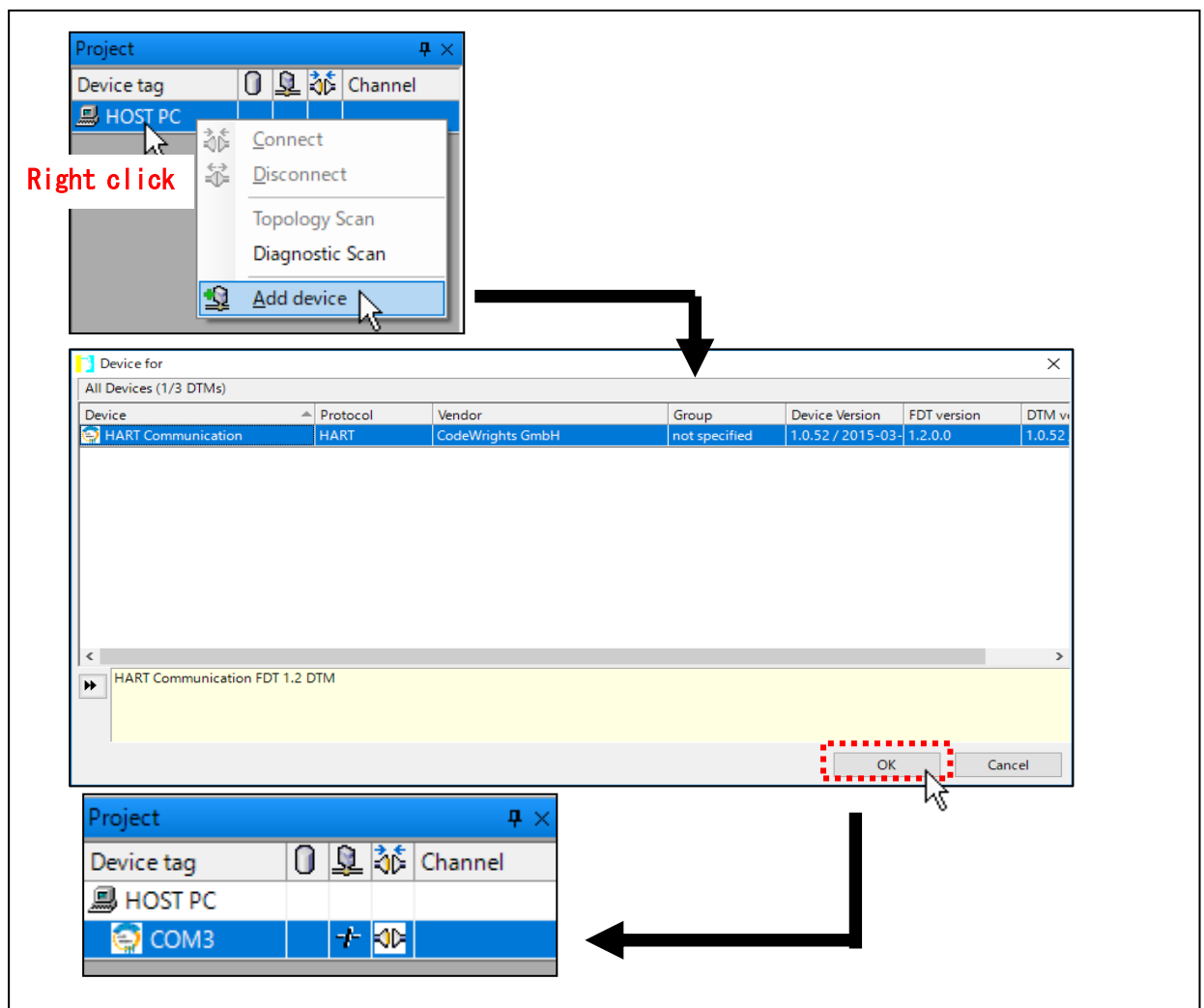
(\* When "Project screen" is already displayed, "Project F2" Clicking it will disappear the "Project screen". In that case, click "Project F2" again on the toolbar "View" and Please display "Project screen". )



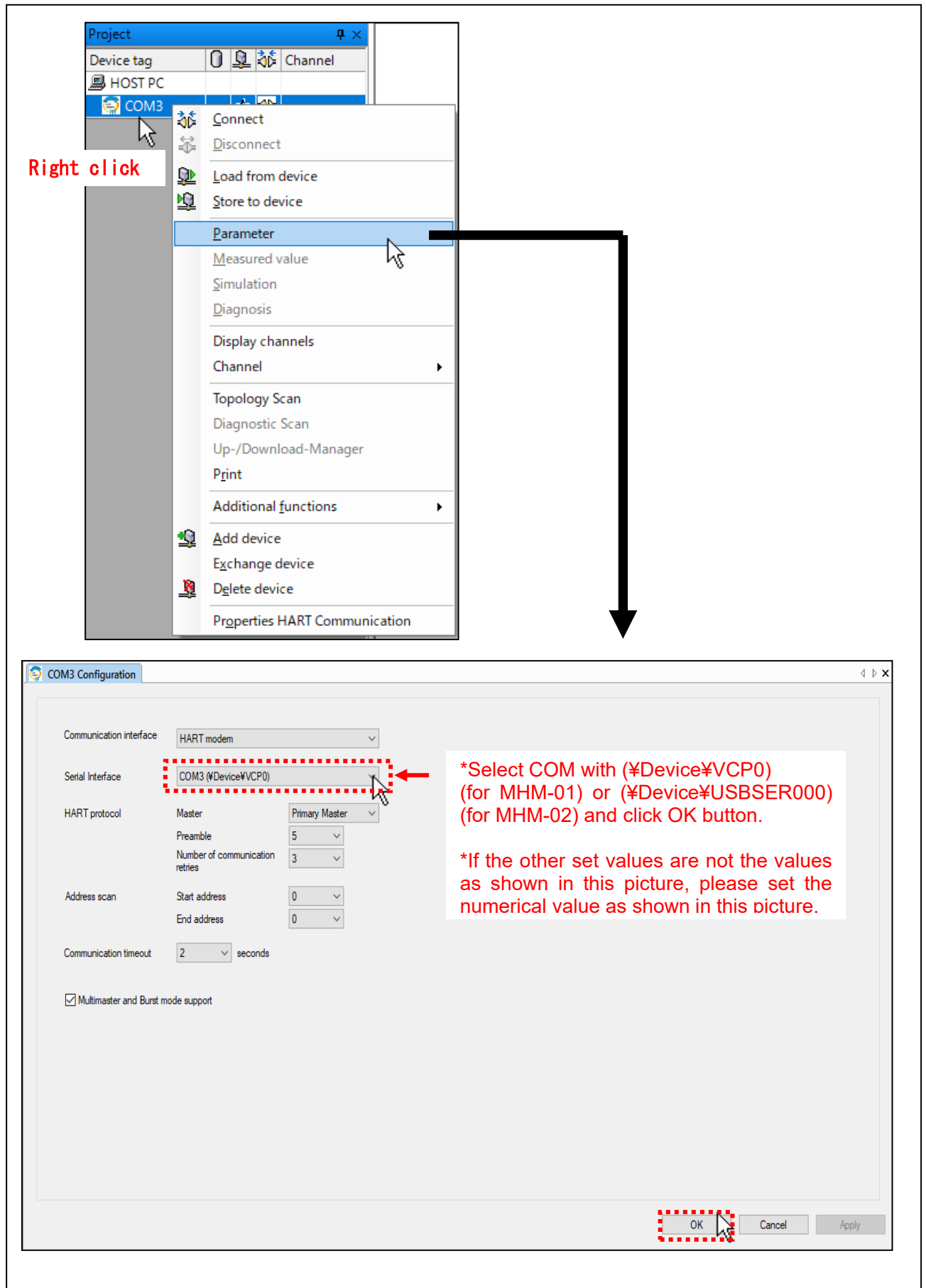
Move the cursor to "HOST PC" in the Project screen, right click and click the item "Add device".

The Device for screen will be displayed. Please select "HART Communication" and click the OK button.

"COM \*\*" is displayed under "HOST PC" in the Project screen.



Move the cursor to "COM \*" displayed in the Project screen, right click and select "Parameter" and click. COM Parameter will be displayed on the right side of the screen.  
 Select the COM listed in (Serial Interface) (¥Device¥VCP0)(In the case of MHM-01) or (¥Device¥USBSE000) (In the case of MHM-02) and click the OK button.



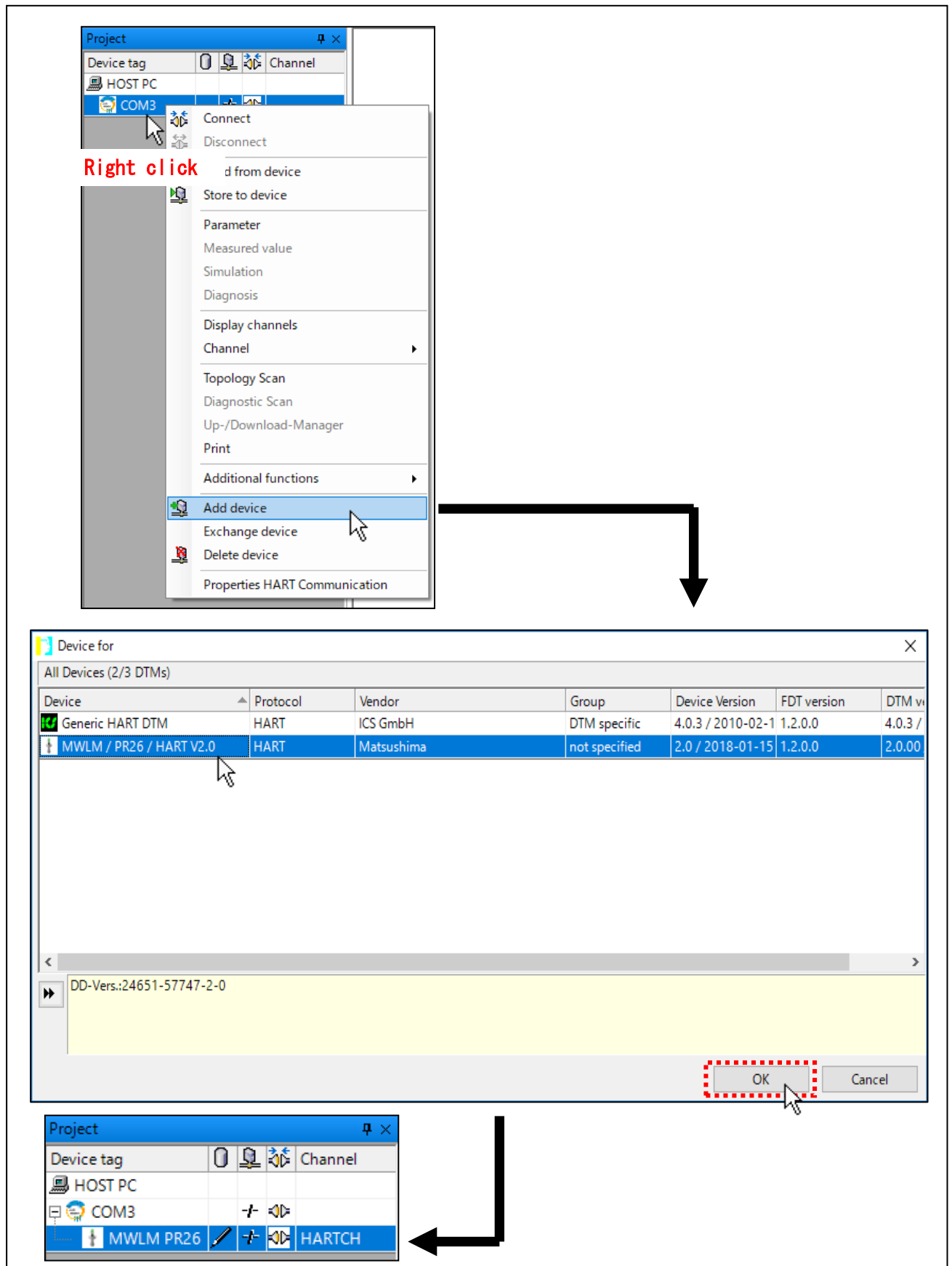
## (2) Setting of the device DTM

"COM \*" displayed in the Project screen has been changed to "COM" with a different number.

Move the cursor to the changed "COM", right click, and click on the item of Add device.

The Device for screen will be displayed, please select "MWLM / PR 26 / HART" and click the OK button.

"MWLM/PR26/HART" is displayed in the Project screen.

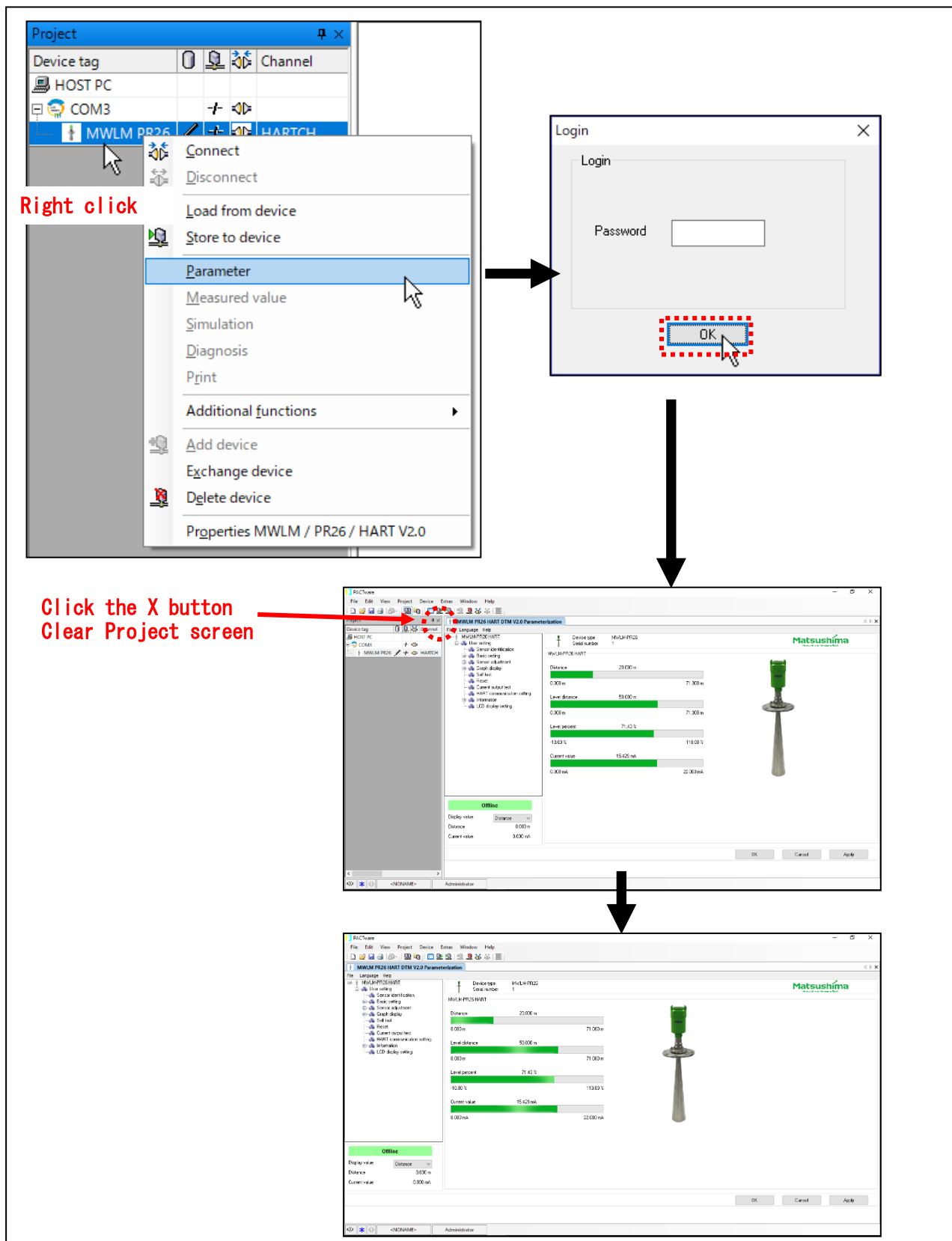


Move the cursor to "MWLM/PR26/HART" displayed in the Project screen, right click Click on the item of Parameter.

As the password screen (Login screen) is displayed, please do not enter anything in the password, and click the OK button.

"Matsushima DTM" in English is displayed, please click the × button to delete the Project screen.

(\*If you do not close "the Project screen", (4) Save a project (see page 36) When saving the file, It will be saved with "the Project screen" displayed. When using a personal computer with a small screen Size, "Matsushima DTM" display area becomes narrow and it may be hard to see. )

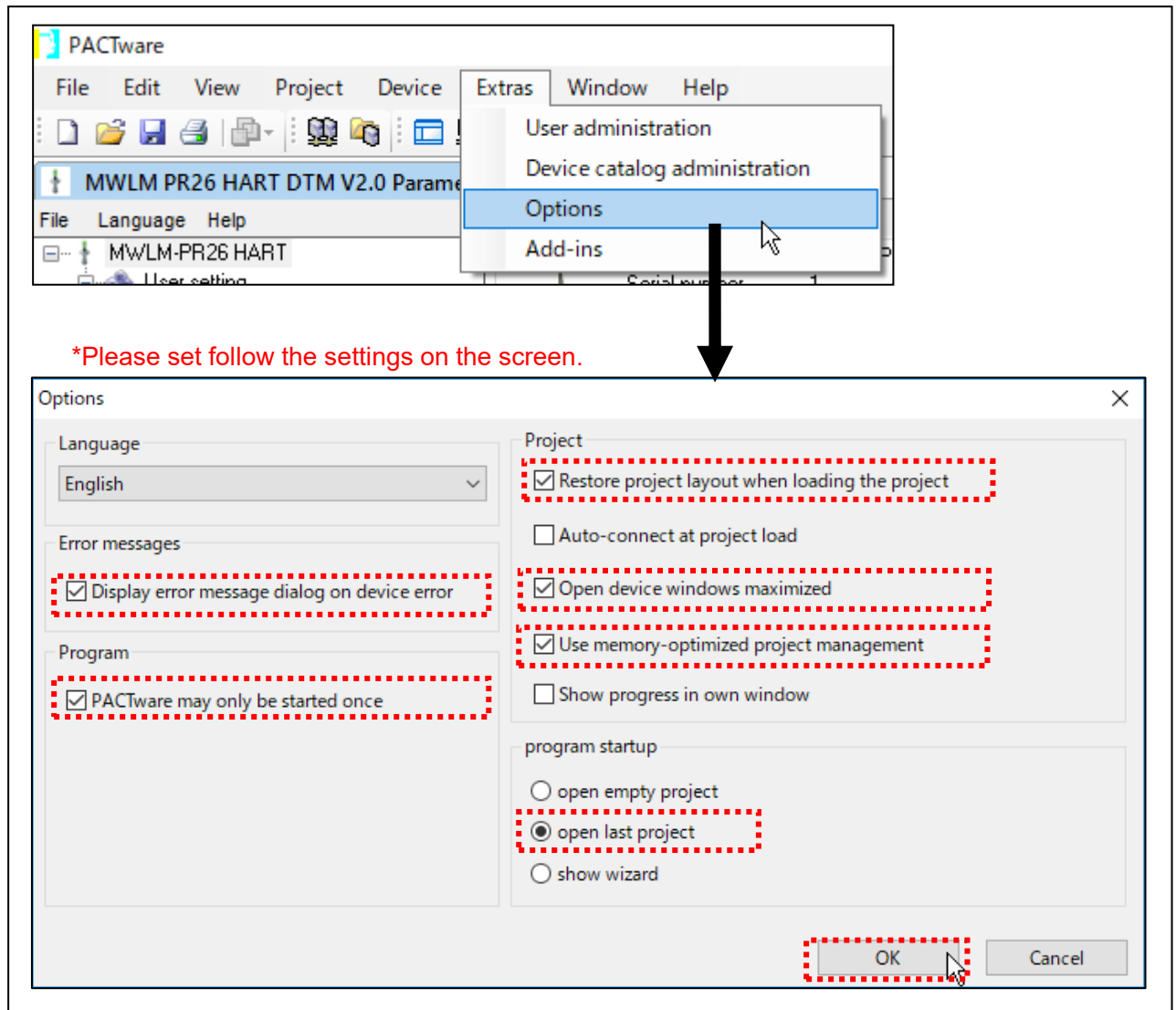


### (3) Setting of the options

Click "Options" in the toolbar "Extras".

The "Options" screen will be displayed, so please confirm that it is the setting as shown in the "Options" screen below.

If it is not the setting as shown on the "Option" screen below, please set it according to the picture and click the OK button.

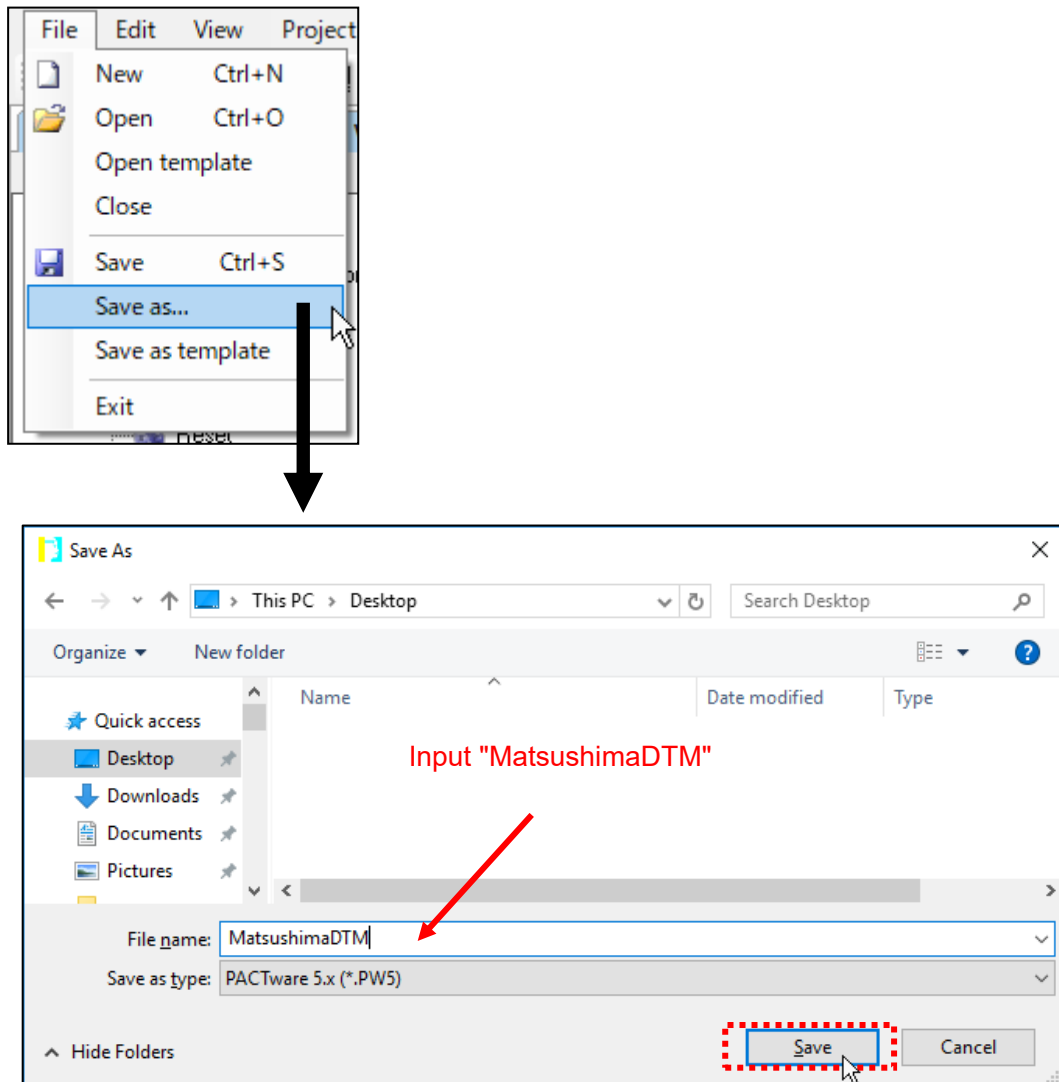


#### (4) Save a project

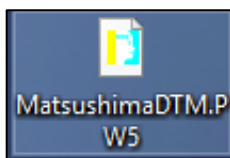
Save the auto start setting with a name.

Please click "Save as .." in the File of the tool bar.

After clicking, please save the save destination as "desktop", save file name as "MatsushimaDTM", click the save button.

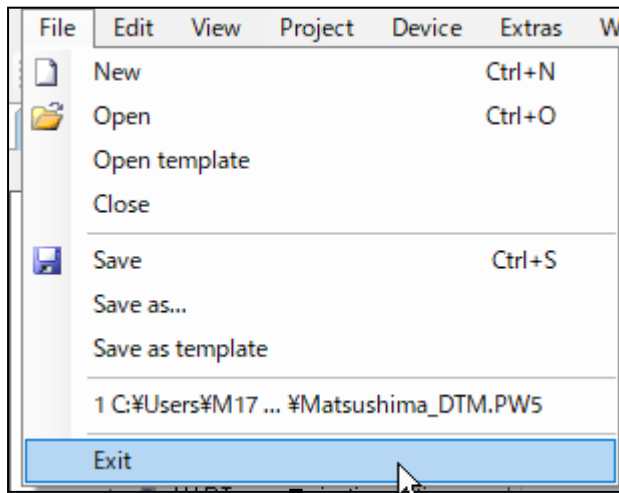


The icon "MatsushimaDTM" shown below appears on the desktop.

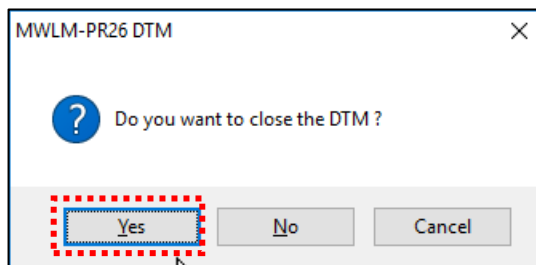


#### 4-4. Termination of the program

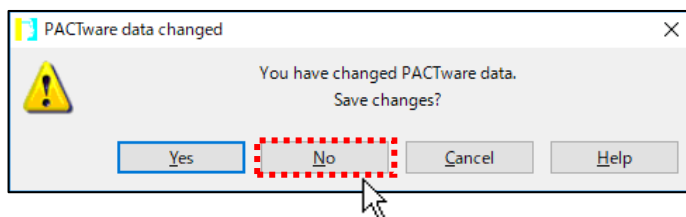
In order to validate the saved setting value, it is necessary to terminate the program once.  
Please select "Exit" in File in the tool bar and click.



The confirmation item of "Do you want to close the DTM?" may be displayed.  
Please click the Yes button.



The confirmation item of "You have changed PACTware data, Save changes?" may be displayed.  
Please click the No button.



This concludes termination of the program.

## 5. Language setting

Start Matsushima DTM.

Double click on the desktop icon (MatsushimaDTM.PW5).

The password input screen is displayed, please do not input anything and click "OK" button.

Matsushima DTM will be displayed automatically.

Move the cursor to "Language" on the DTM screen and click and select the desired language.

The confirmation item will be displayed, please click the OK button.

(For Windows 11, only English setting is available.)

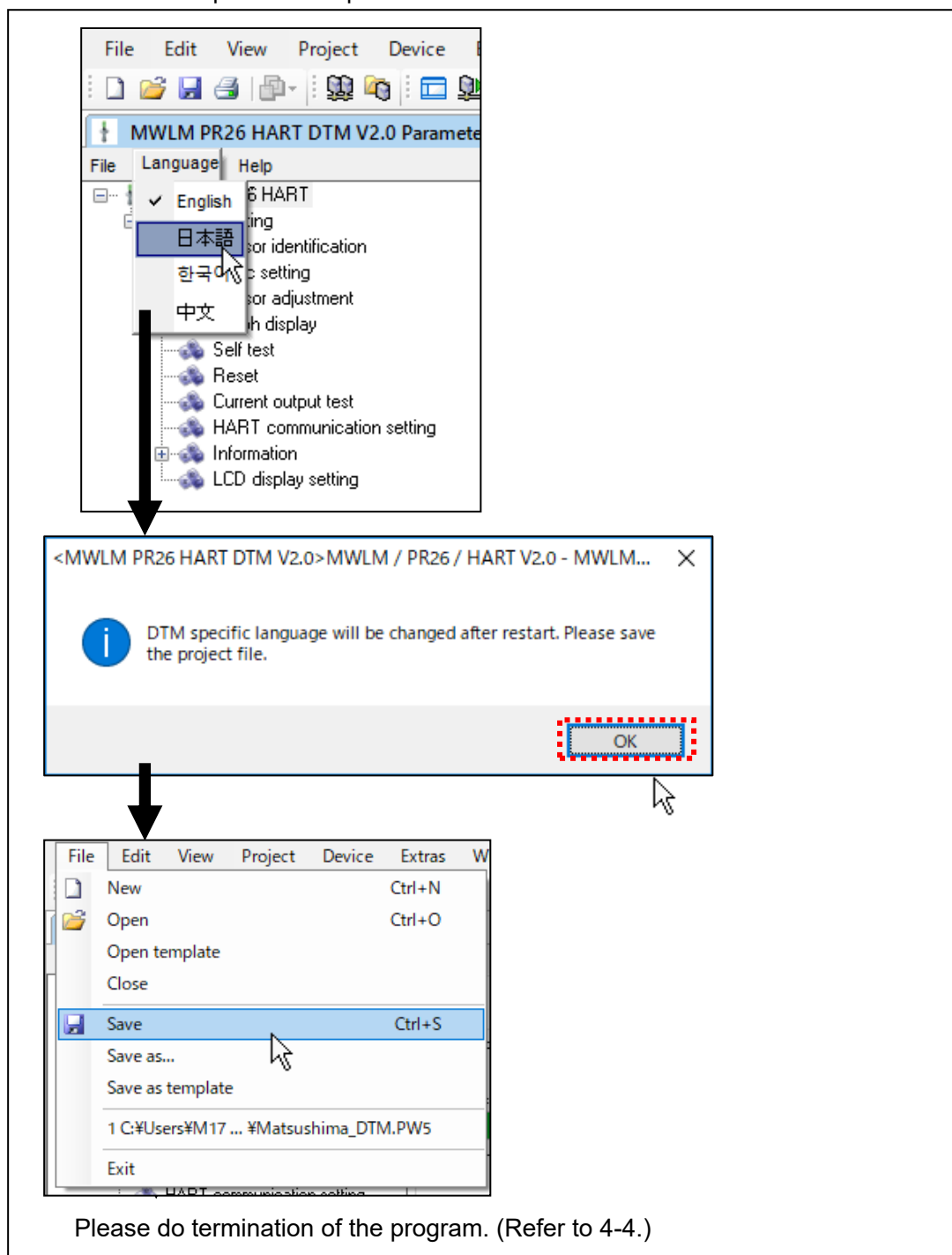
Please select "Save" in File in the toolbar and click.

After clicking, in order to validate the saved setting value, it is necessary to terminate the program once.

The way to terminate the program is the same as 4-4. Termination of the program.

Please terminate the program and complete the language setting.

The figure shows an example set to Japanese.



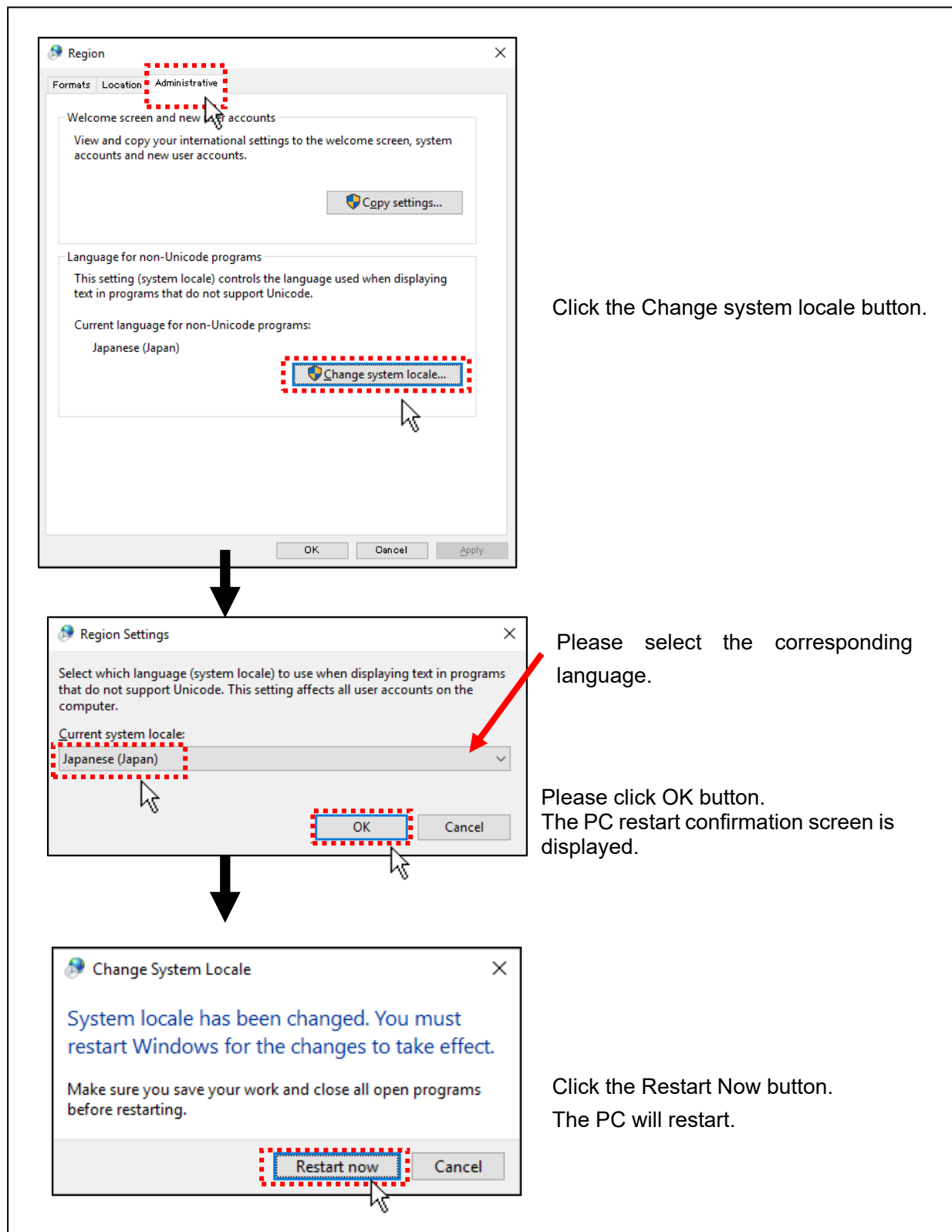
When using Japanese, Korean, Chinese, garbled characters may occur.  
Please make the following settings to display characters correctly.

Select Start> Windows System Tools> Control Panel> Clock, Language, and Region> Region.

The region setting screen is displayed.

Click on the "Administrative" tab in the region setting screen and select the corresponding language in "Language for non-Unicode programs".

The figure shows an example set to Japanese.



## 6. Change of the startup file name (MatsushimaDTM.PW 5)

It is a setting method when changing the startup file name (desktop icon display).

It is used when you make a mistake startup file name or want to change the startup file name.

Start Matsushima DTM.

Double click on the desktop icon (MatsushimaDTM.PW5).

The password input screen is displayed, please do not input anything and click "OK" button.

Matsushima DTM will be displayed automatically.

Please select "Save as..." in File in the toolbar of PACTware and click.

Please set the save destination to "desktop" and input the desired file name in the save file name and click the save button.

In order to activate the setting, it is necessary to terminate the program once.

The way to terminate the program is the same as 4-4. Termination of the program.

Please terminate the program and complete change of the startup file name.

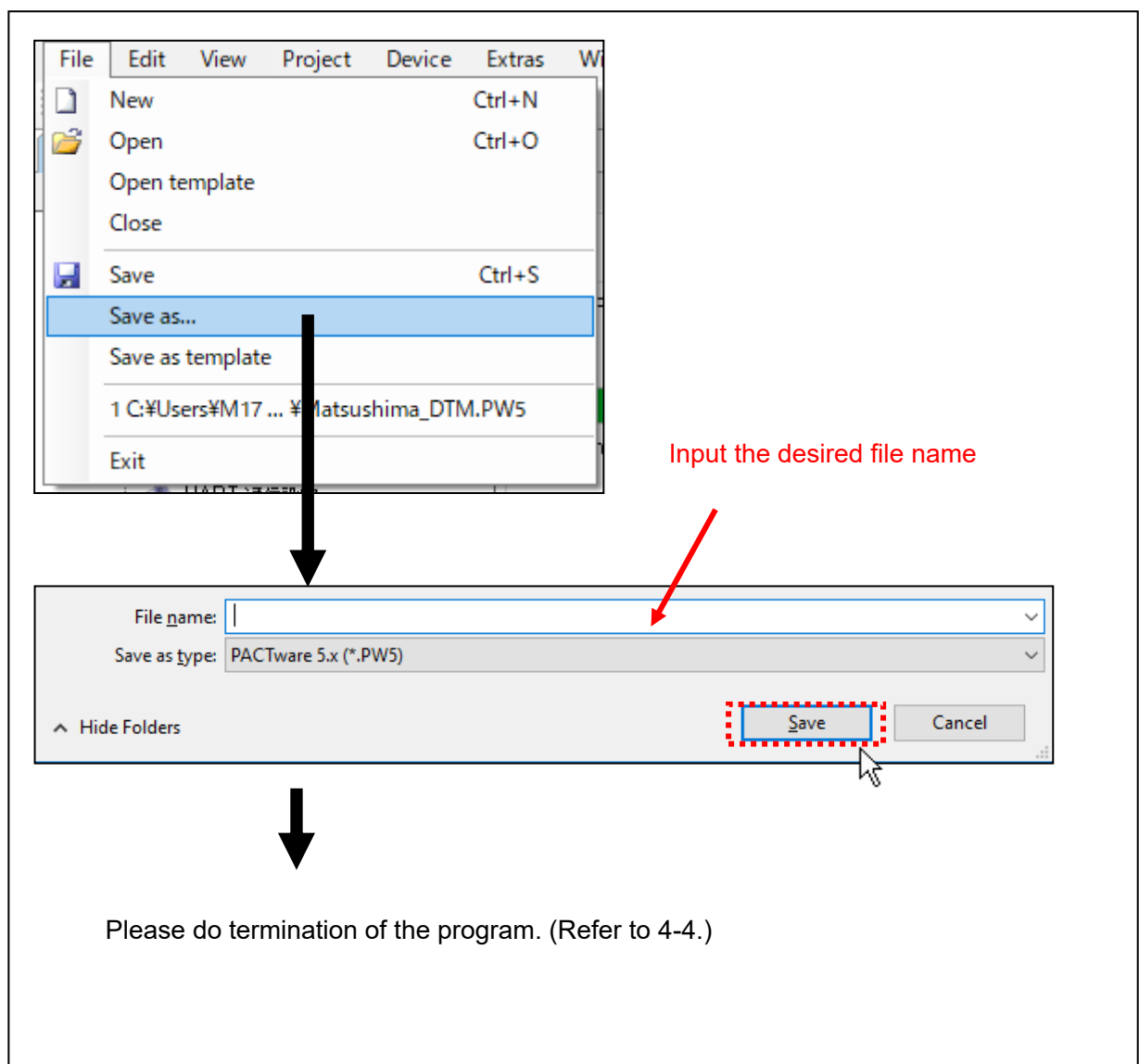
After changing the startup file name, the icon of the file name changed to the desktop is displayed.

There are existing icons on the desktop, but there is no problem in terms of adjustment.

To delete an unnecessary icon, move the cursor to the icon,

Since there is a "Delete" item when right clicking, please click "Delete".

Unnecessary icons are deleted.



## 7. Uninstallation of software

If you want to delete Matsushima DTM and related software, please execute this uninstallation.

\* If you are using "PACTware" in common with another company's DTM,

Please do not uninstall from 7-1. to 7-3.

If you are using the HART modem "MHM-01" or "MHM-02" in common with another company's DTM,

Please do not uninstall 7-5. Uninstallation of the HART Modem Driver.

Please do not uninstall only 7-4. Uninstallation of the Matsushima DTM.

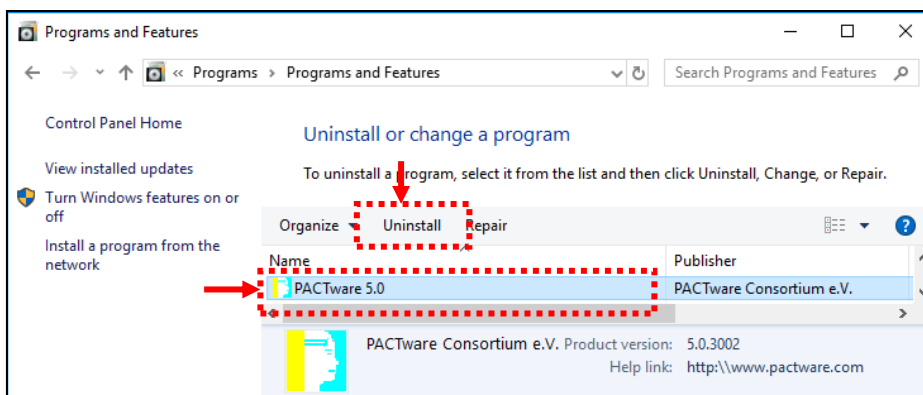
Please close all open programs before starting uninstallation.

Administrator authority is required for software uninstallation.

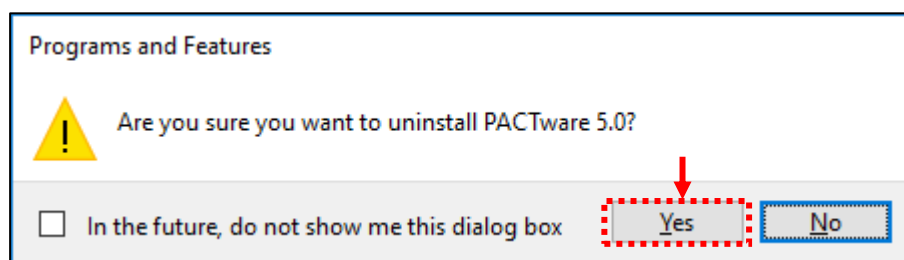
Please sign in with the authority of the administrator of the computer.

### 7-1. Uninstallation of the PACTware

Please select "PACTware" in "Start"> "Windows System Tools"> "Control Panel"> "Uninstall a Program" and click "Uninstall".



The uninstallation confirmation screen will be displayed. Please click "Yes".



For Windows 8, 10, and 11 The message screen is displayed.

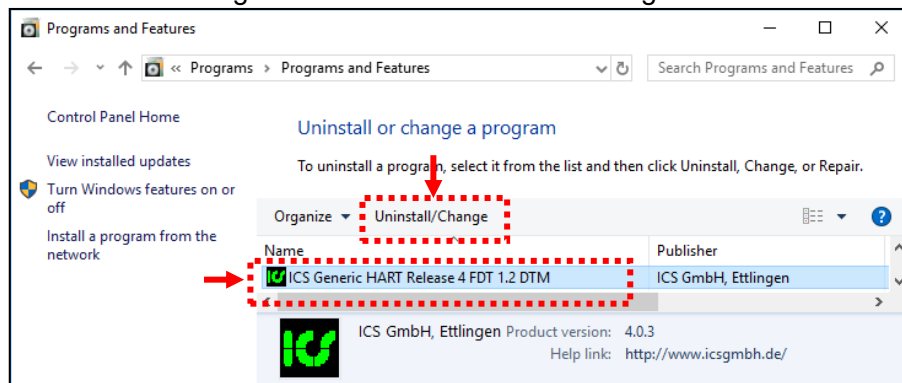
("Do you want to allow this app from an unknown publisher to make changes to your device?")

Please click "Yes".

Uninstallation of PACTware will start.

## 7-2. Uninstallation of the Generic HART-DTM

Please select "ICS Generic HART Release 4 FDT 1.2 DTM" in "Start"> "Windows System Tools"> "Control Panel"> "Uninstall Program" and click "Uninstall / Change".



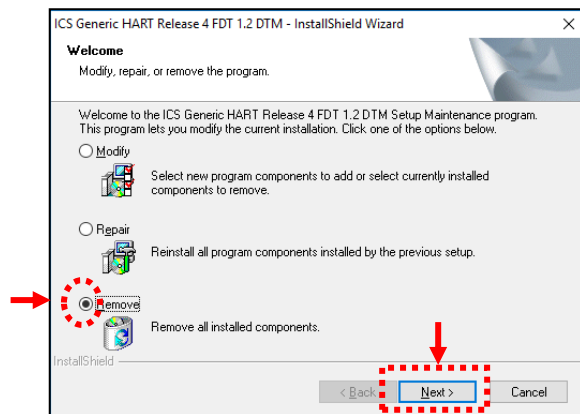
For Windows 8, 10, and 11 The message screen is displayed.

("Do you want to allow this app to make changes to your device?")

Please click "Yes".

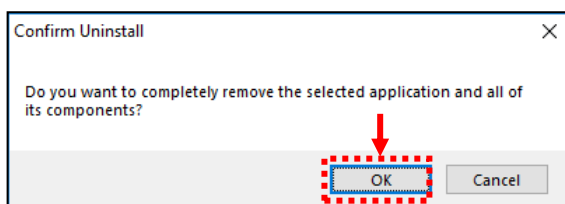
The ICS Generic HART setting screen is displayed.

Please check "Remove" on the ICS Generic HART setting screen and click "Next>".



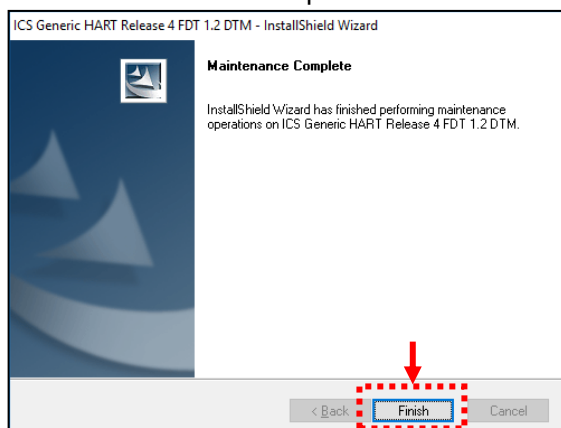
The confirmation screen will be displayed. Please click "OK" on the confirmation screen.

Uninstallation of Genetic HART - DTM will start.



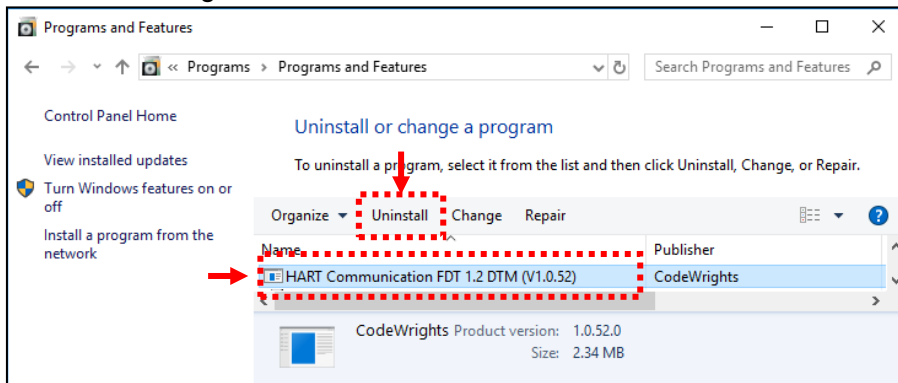
After uninstallation of Generic HART - DTM, an exit screen will be displayed.

Please click "Finish" to complete uninstallation of Generic HART - DTM.

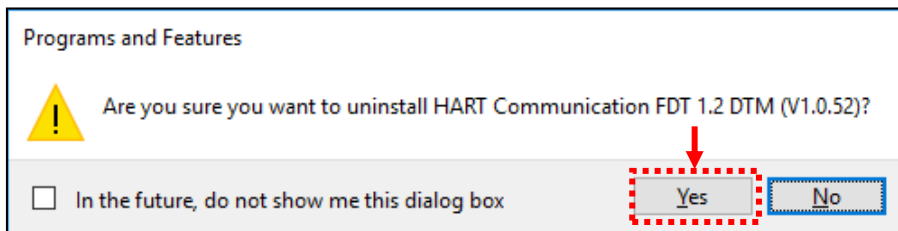


### 7-3. Uninstallation of the HART Communication DTM

Please select "HART Communication FDT 1.2 DTM" in "Start"> "Windows System Tools"> "Control Panel"> "Uninstall a Program" and click "Uninstall".



The confirmation screen will be displayed. Please click "Yes" on the confirmation screen.



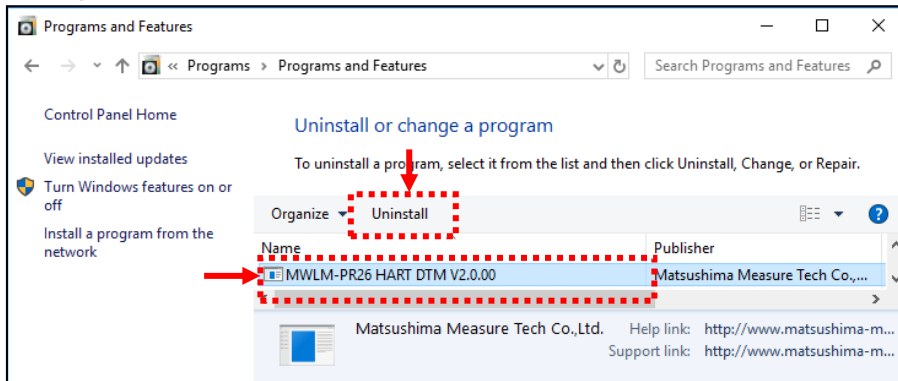
For Windows 8, 10, and 11 The message screen is displayed.

("Do you want to allow this app from an unknown publisher to make changes to your device?")  
Please click "Yes".

Uninstallation of HART Communication DTM will start.

#### 7-4. Uninstallation of the Matsushima DTM

Please select "MWLM-PR26 HART DTM" in "Start"> "Windows System Tools"> "Control Panel"> "Uninstall a Program" and click "Uninstall".

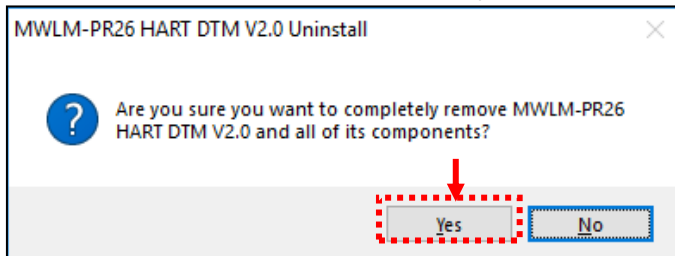


For Windows 8, 10, and 11 The message screen is displayed.

("Do you want to allow this app to make changes to your device?")

Please click "Yes".

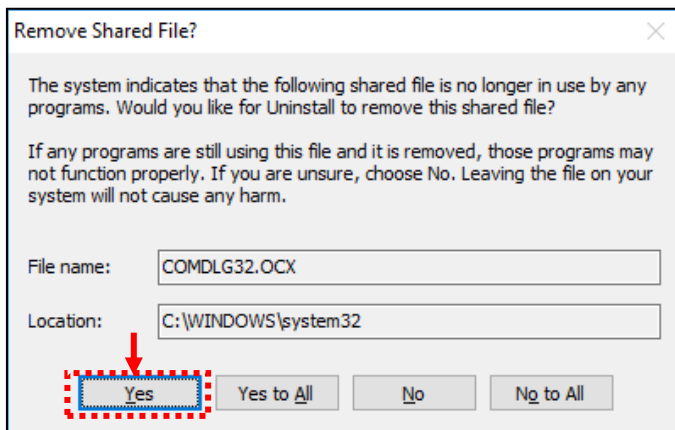
The confirmation screen will be displayed. Please click "Yes" on the confirmation screen.



Uninstallation of Matsushima DTM will start.

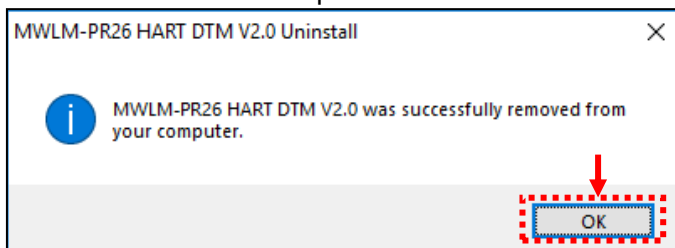
During uninstallation, the following screen may be displayed.

Please click "Yes".



After uninstalling Matsushima DTM, the exit screen will be displayed.

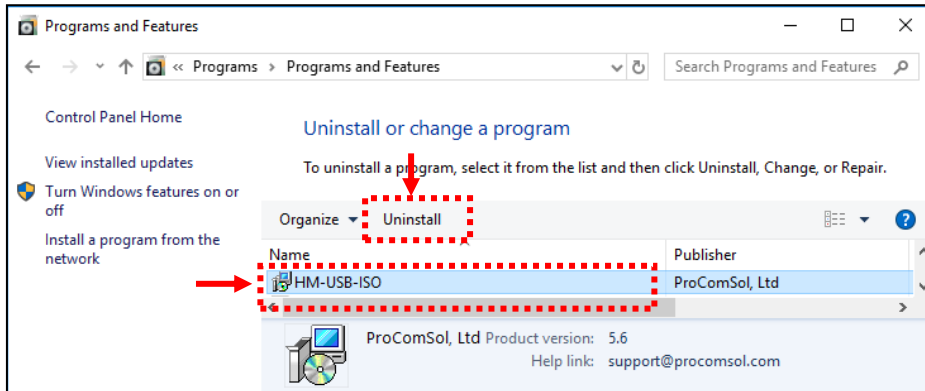
Please click "OK" to complete uninstallation of Matsushima DTM.



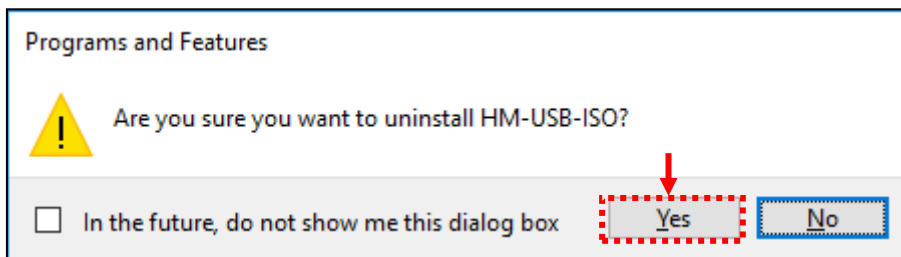
## 7-5. Uninstallation of the HART Modem Driver

### 7-5-1. In the case of MHM-01

Please select "HM-USB-ISO" in "Start"> "Windows System Tools"> "Control Panel"> "Uninstall a Program" and click "Uninstall".



The confirmation screen will be displayed. Please click "Yes" on the confirmation screen.



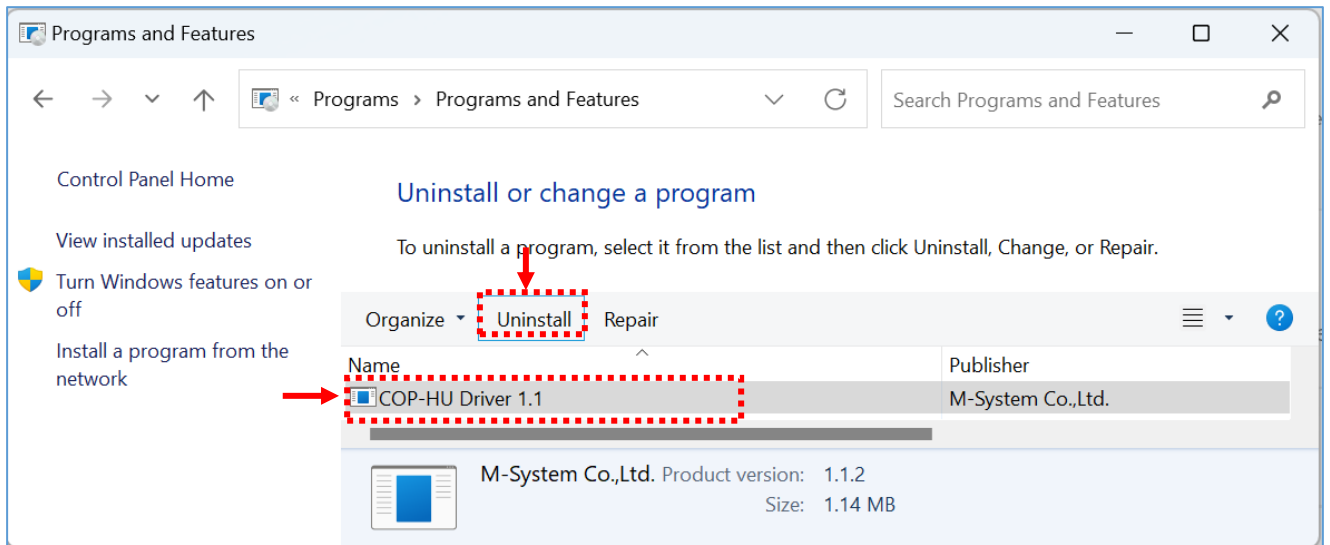
For Windows 8, 10, and 11 The message screen is displayed.

("Do you want to allow this app from an unknown publisher to make changes to your device?")  
Please click "Yes".

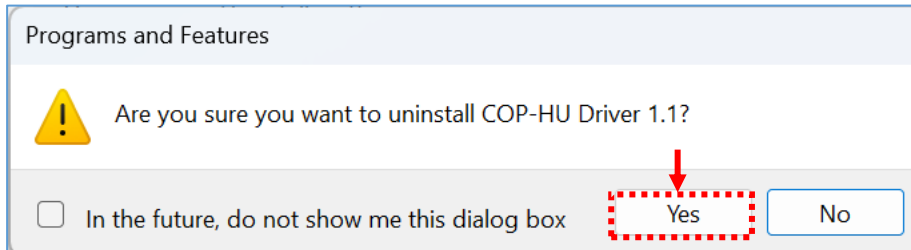
Uninstallation of the HART modem driver will start.

### 7-5-2. In the case of MHM-02

Please select "COP-HU" in "Start"> "Windows System Tools"> "Control Panel"> "Uninstall a Program" and click "Uninstall".



The confirmation screen will be displayed. Please click "Yes" on the confirmation screen.



For Windows 8, 10, and 11 The message screen is displayed.

("Do you want to allow this app from an unknown publisher to make changes to your device?")  
Please click "Yes".

Uninstallation of the HART modem driver will start.